

Fig. 3.1.1 Age-adjusted incidence rates - 1953-2005

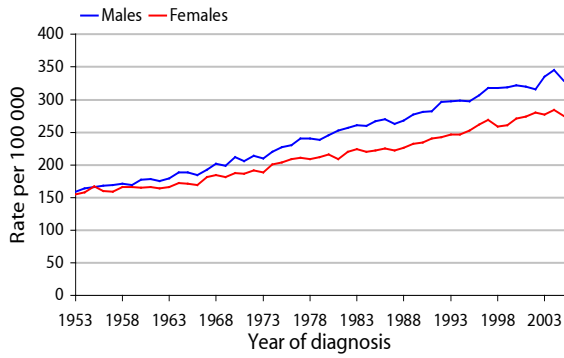


Fig. 3.2.1 Age-specific incidence rates - 2001-2005

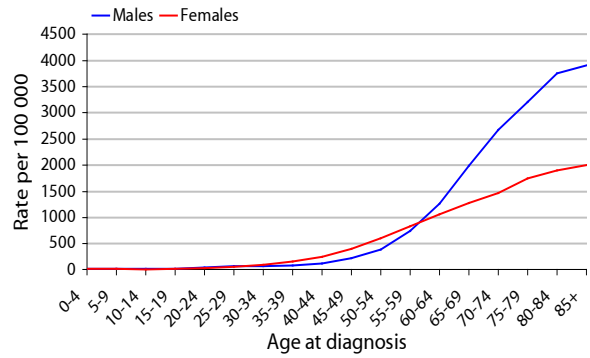


Fig. 3.3.1 Relative risk by county 1996-2005, males

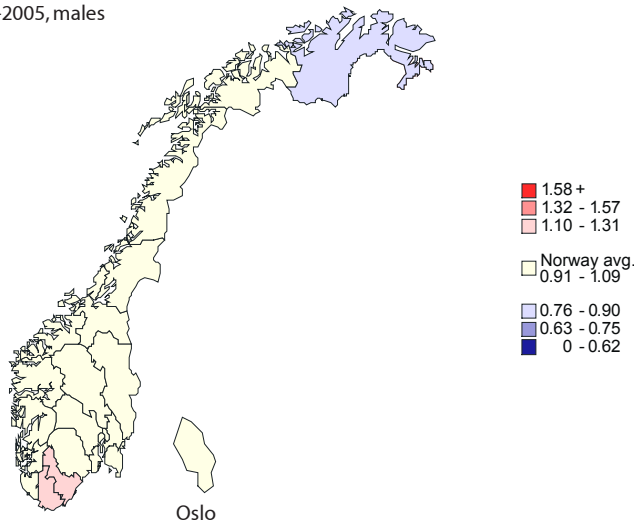


Fig. 3.4.1 Relative risk by county 1996-2005, females

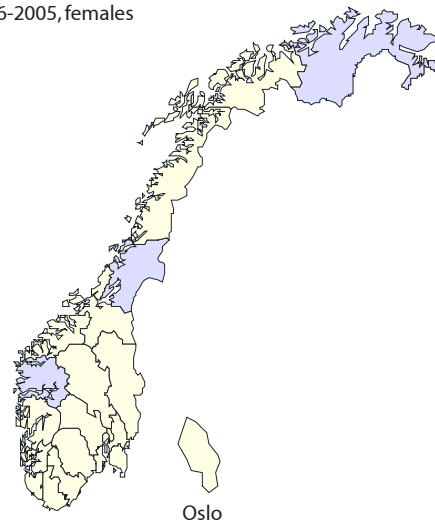


Fig. 3.5.1 5-year relative survival in percent by period - 1956-2000, males

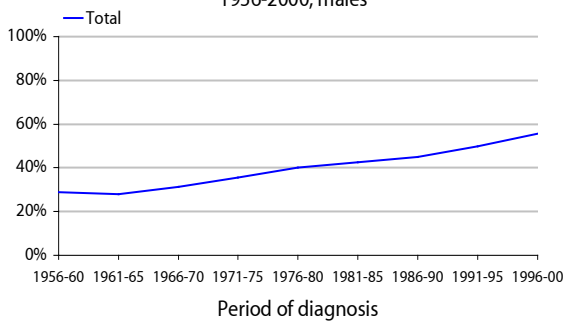


Fig. 3.6.1 5-year relative survival in percent by period - 1956-2000, females

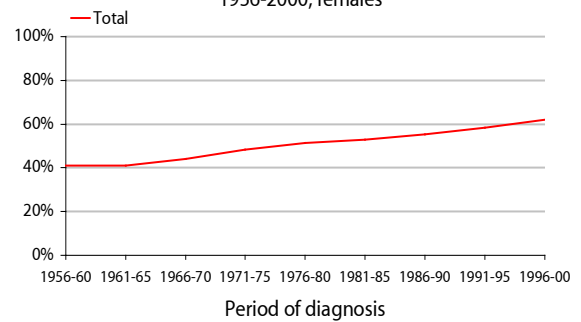


Fig. 3.7.1 1-5-year relative survival, diagnosed in the period 1996-2000, males

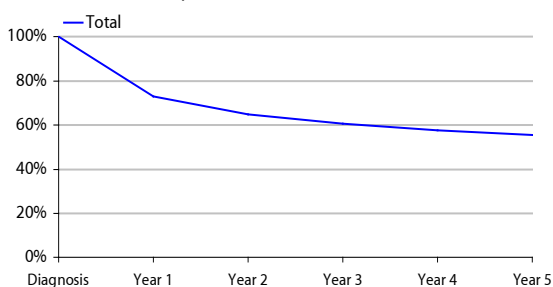


Fig. 3.8.1 1-5-year relative survival, diagnosed in the period 1996-2000, females

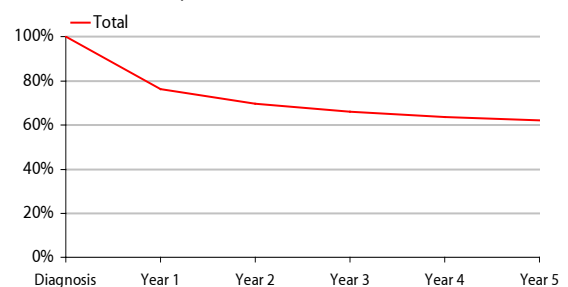


Fig. 3.1.2 Age-adjusted incidence rates - 1953-2005

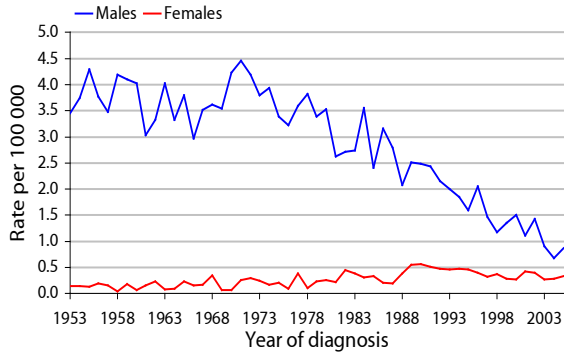


Fig. 3.2.2 Age-specific incidence rates - 2001-2005

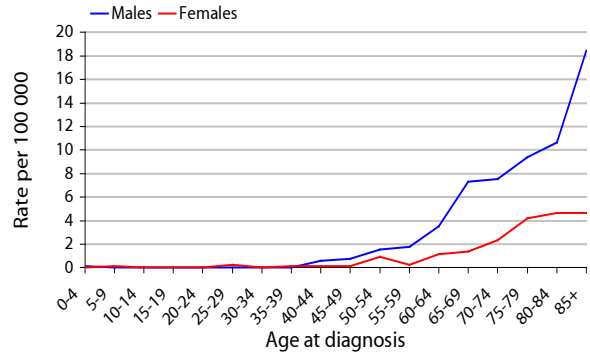
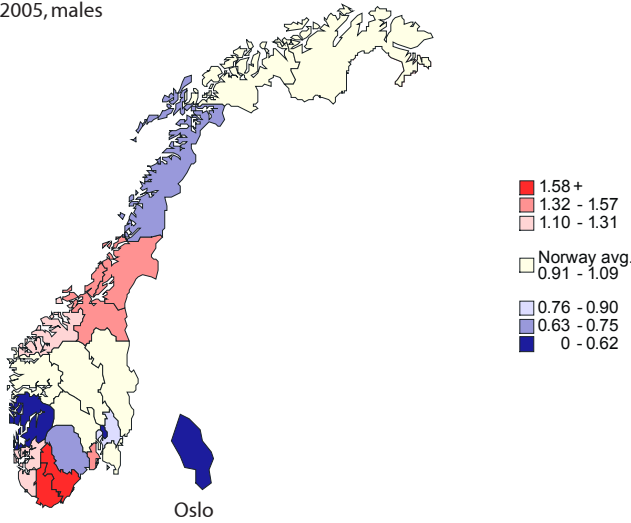
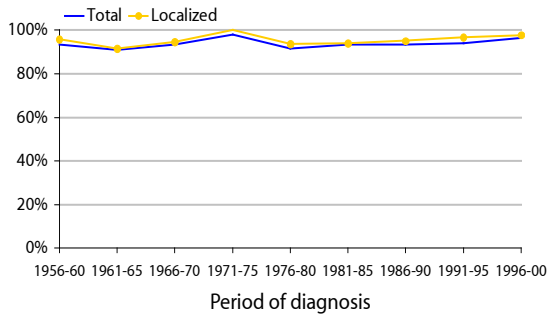


Fig. 3.3.2 Relative risk by county 1996-2005, males



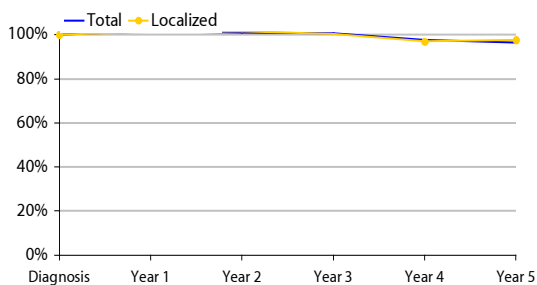
Map for females is not presented due to small numbers

Fig. 3.5.2 5-year relative survival in percent by period and stage - 1956-2000, males



Data for females is not presented due to small numbers

Fig. 3.7.2 1-5-year relative survival by stage, diagnosed in the period 1996-2000, males



Data for females is not presented due to small numbers

Fig. 3.1.3 Age-adjusted incidence rates - 1953-2005

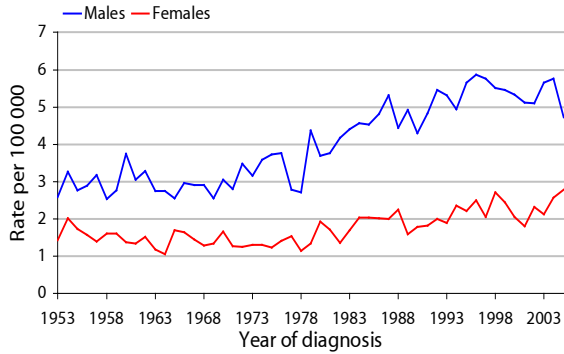


Fig. 3.2.3 Age-specific incidence rates - 2001-2005

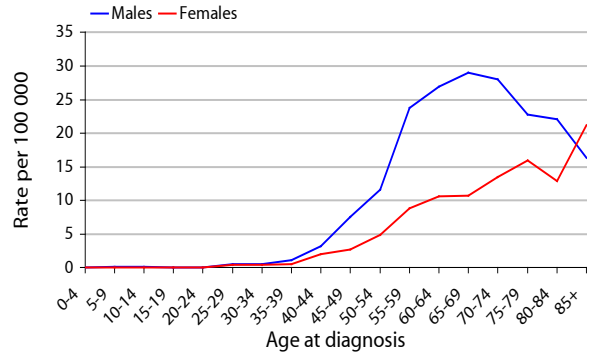


Fig. 3.3.3 Relative risk by county 1996-2005, males

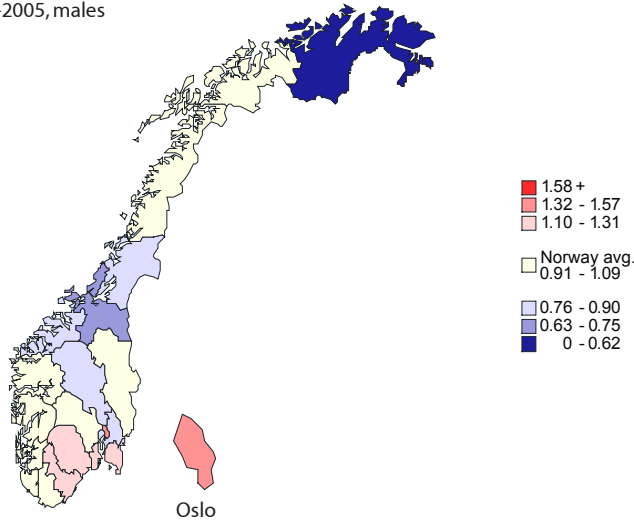


Fig. 3.4.3 Relative risk by county 1996-2005, females

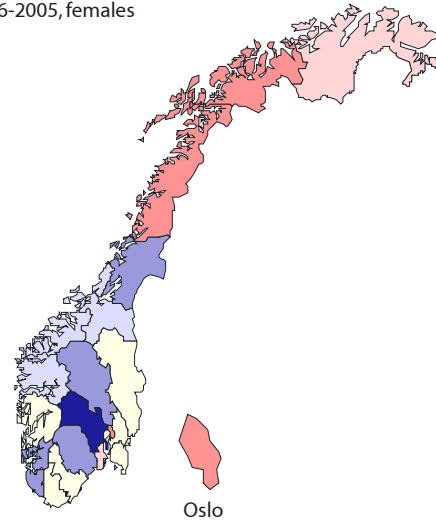


Fig. 3.5.3 5-year relative survival in percent by period and stage - 1956-2000, males

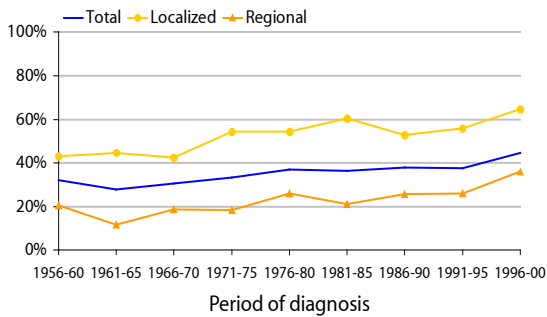


Fig. 3.6.3 5-year relative survival in percent by period and stage - 1956-2000, females

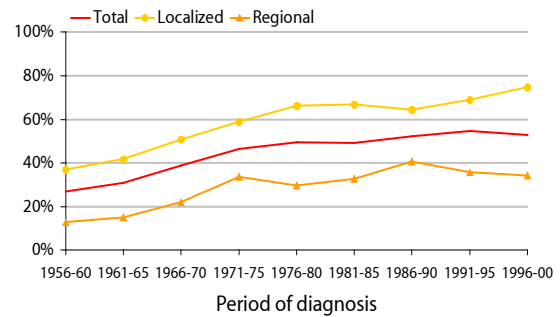


Fig. 3.7.3 1-5-year relative survival by stage, diagnosed in the period 1996-2000, males

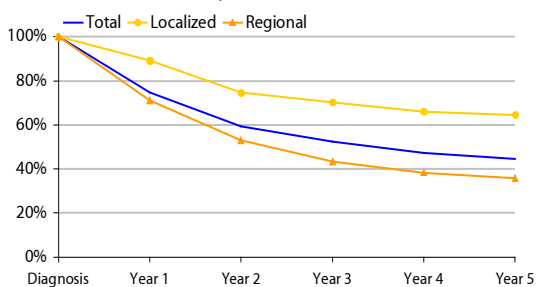
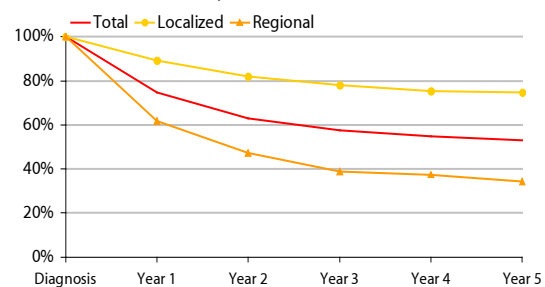


Fig. 3.8.3 1-5-year relative survival by stage, diagnosed in the period 1996-2000, females



# 150 Oesophagus

Fig. 3.1.4 Age-adjusted incidence rates - 1953-2005

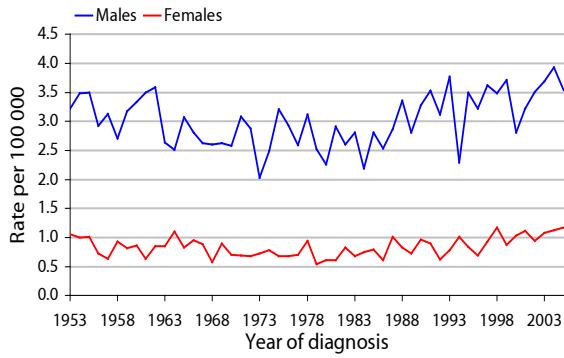


Fig. 3.2.4 Age-specific incidence rates - 2001-2005

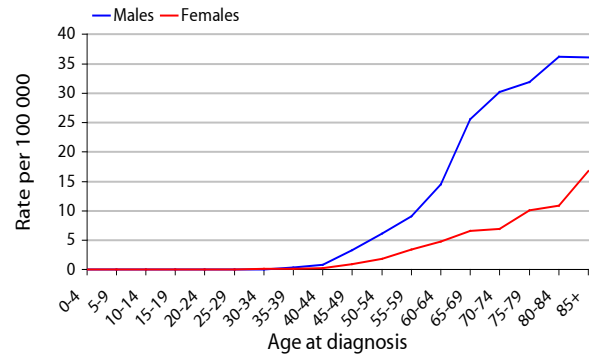


Fig. 3.3.4 Relative risk by county 1996-2005, males

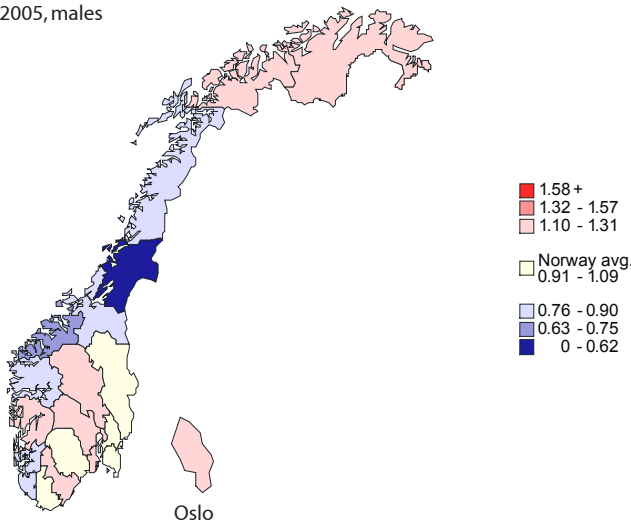


Fig. 3.4.4 Relative risk by county 1996-2005, females

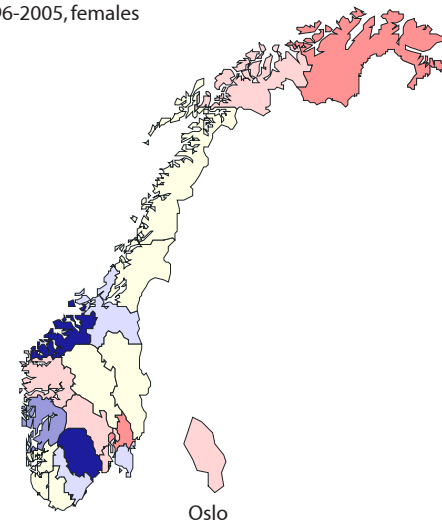


Fig. 3.5.4 5-year relative survival in percent by period and stage - 1956-2000, males

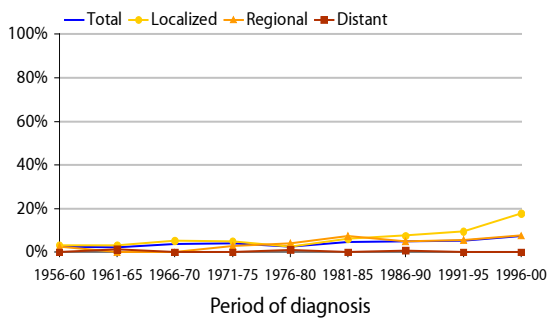


Fig. 3.6.4 5-year relative survival in percent by period and stage - 1956-2000, females

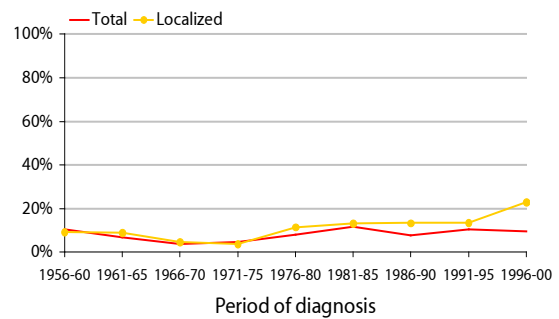


Fig. 3.7.4 1-5-year relative survival by stage, diagnosed in the period 1996-2000, males

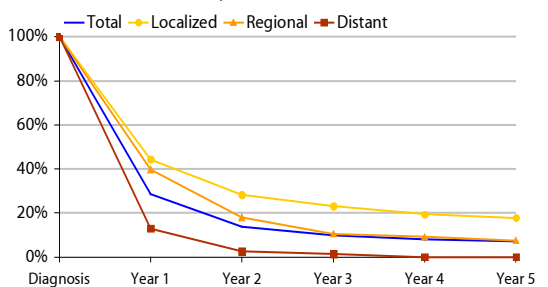


Fig. 3.8.4 1-5-year relative survival by stage, diagnosed in the period 1996-2000, females

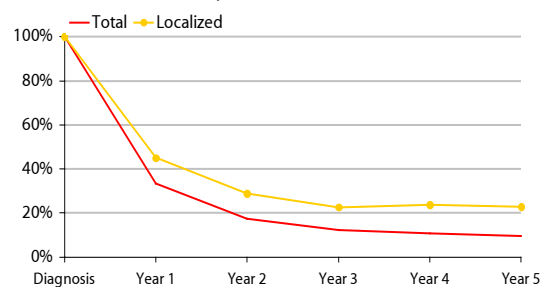


Fig. 3.1.5 Age-adjusted incidence rates - 1953-2005

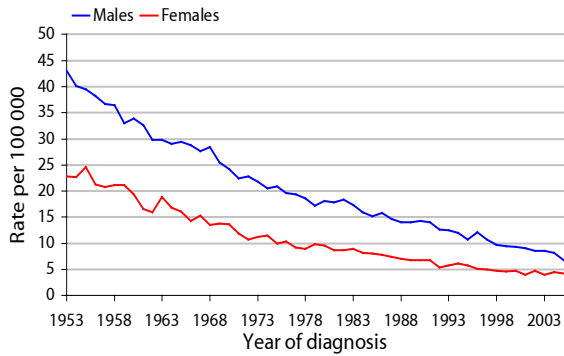


Fig. 3.2.5 Age-specific incidence rates - 2001-2005

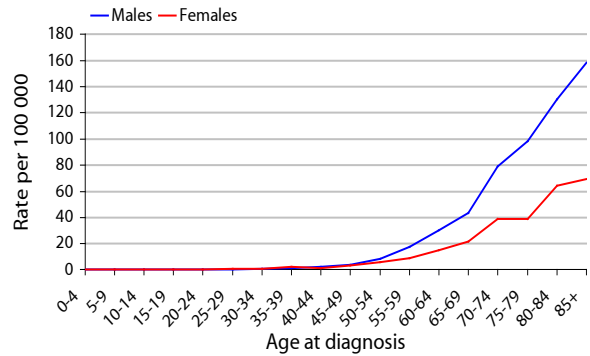


Fig. 3.3.5 Relative risk by county 1996-2005, males

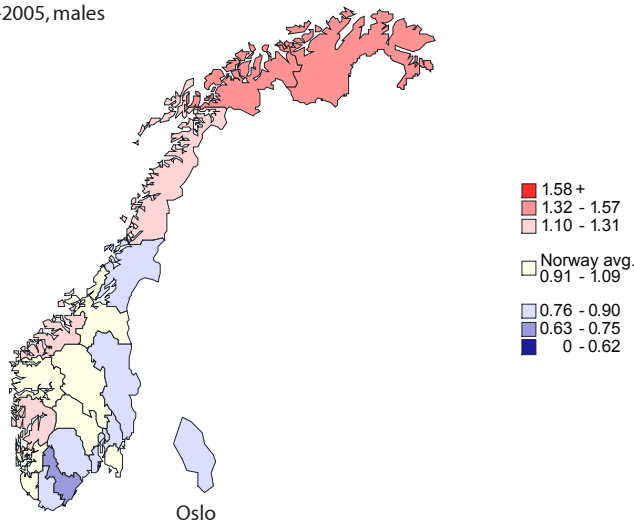


Fig. 3.4.5 Relative risk by county 1996-2005, females

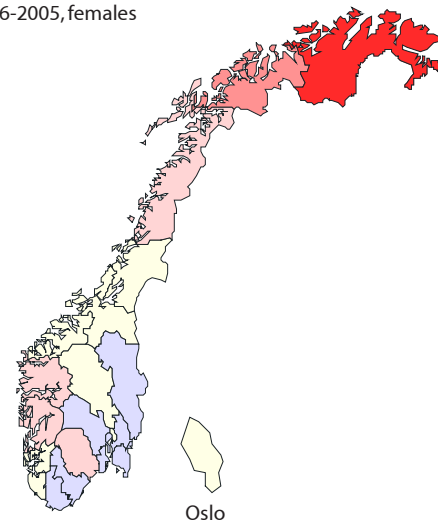


Fig. 3.5.5 5-year relative survival in percent by period and stage - 1956-2000, males

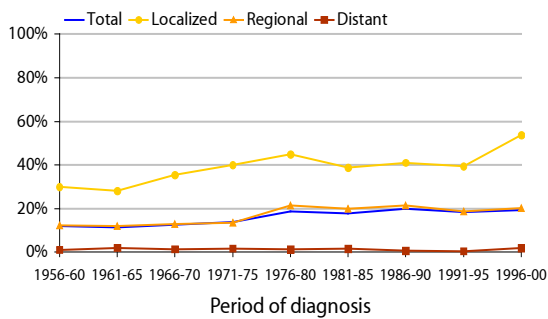


Fig. 3.6.5 5-year relative survival in percent by period and stage - 1956-2000, females

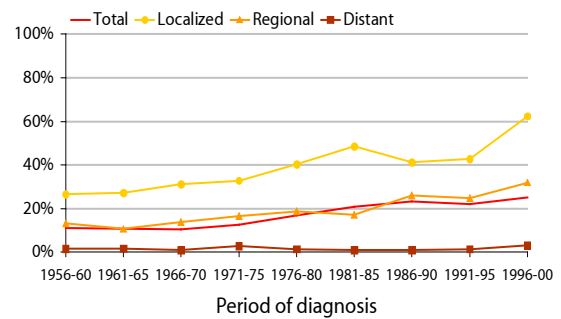


Fig. 3.7.5 1-5-year relative survival by stage, diagnosed in the period 1996-2000, males

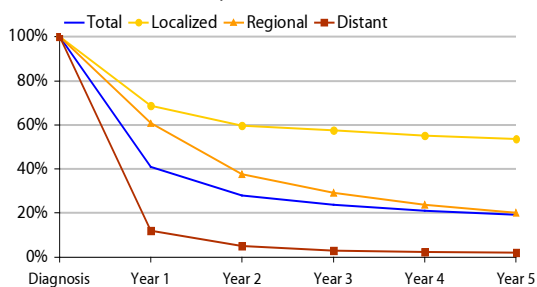


Fig. 3.8.5 1-5-year relative survival by stage, diagnosed in the period 1996-2000, females

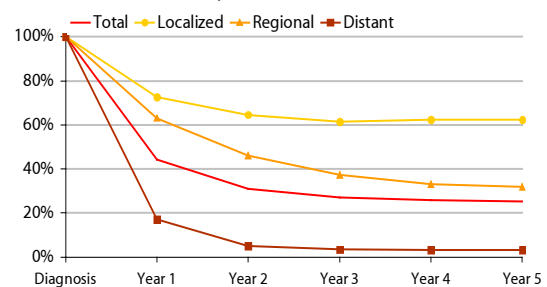


Fig. 3.1.6 Age-adjusted incidence rates - 1953-2005

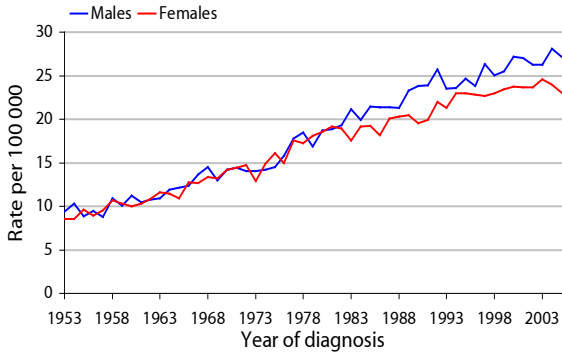


Fig. 3.2.6 Age-specific incidence rates - 2001-2005

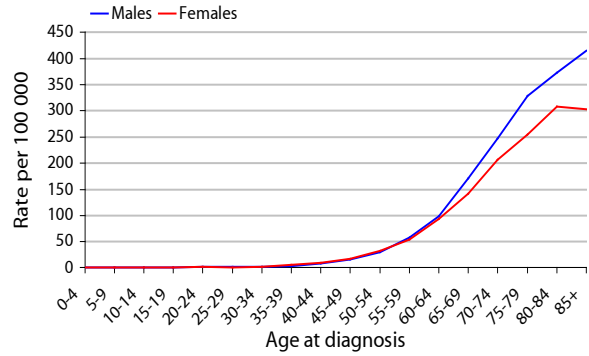


Fig. 3.3.6 Relative risk by county 1996-2005, males

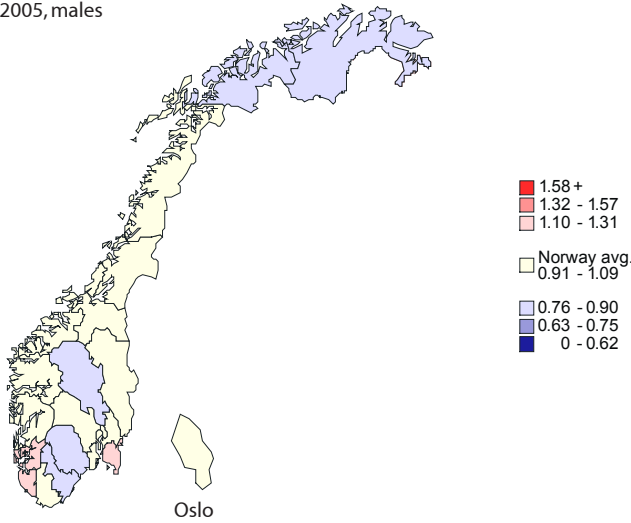


Fig. 3.4.6 Relative risk by county 1996-2005, females

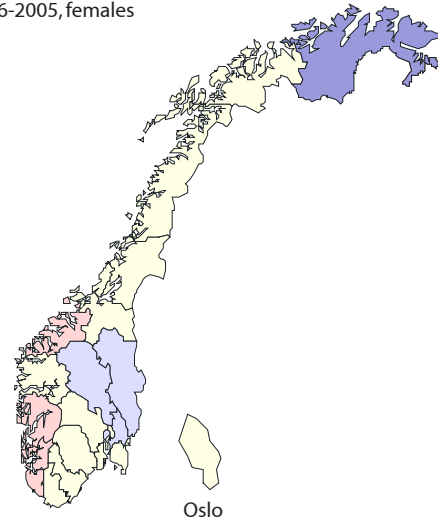


Fig. 3.5.6 5-year relative survival in percent by period and stage - 1956-2000, males

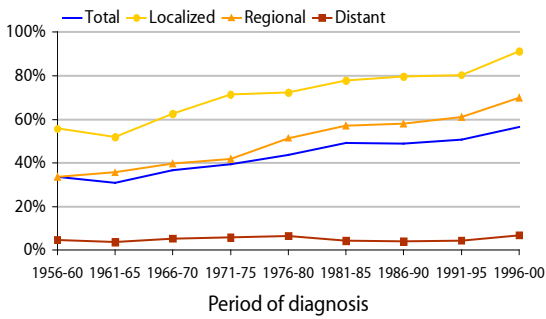


Fig. 3.6.6 5-year relative survival in percent by period and stage - 1956-2000, females

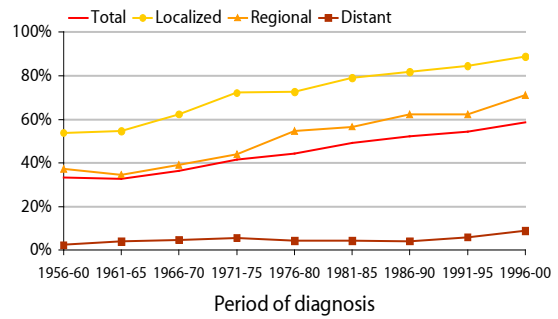


Fig. 3.7.6 1-5-year relative survival by stage, diagnosed in the period 1996-2000, males

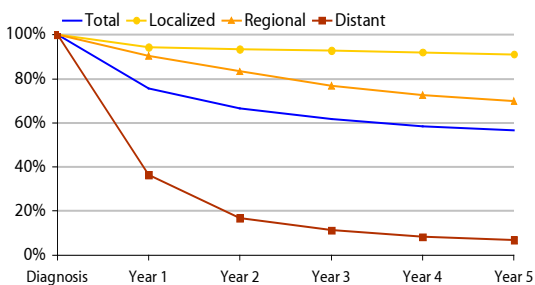


Fig. 3.8.6 1-5-year relative survival by stage, diagnosed in the period 1996-2000, females

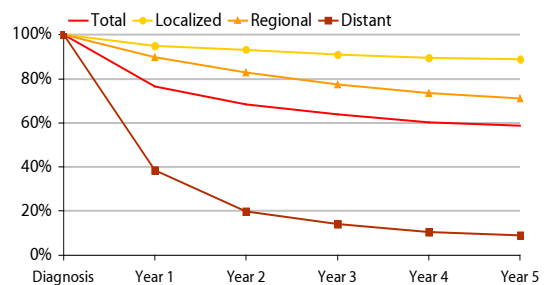


Fig. 3.1.7 Age-adjusted incidence rates - 1953-2005

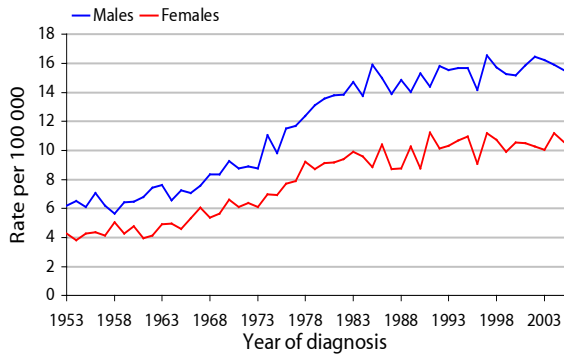


Fig. 3.2.7 Age-specific incidence rates - 2001-2005

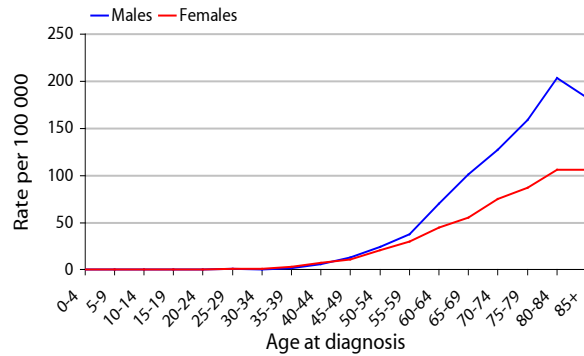


Fig. 3.3.7 Relative risk by county 1996-2005, males

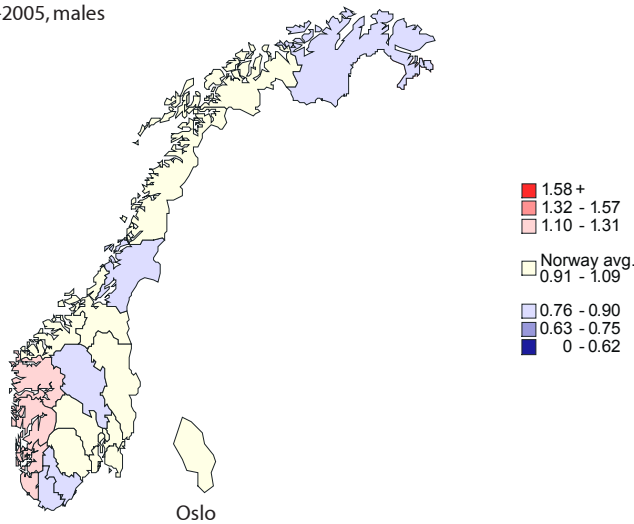


Fig. 3.4.7 Relative risk by county 1996-2005, females

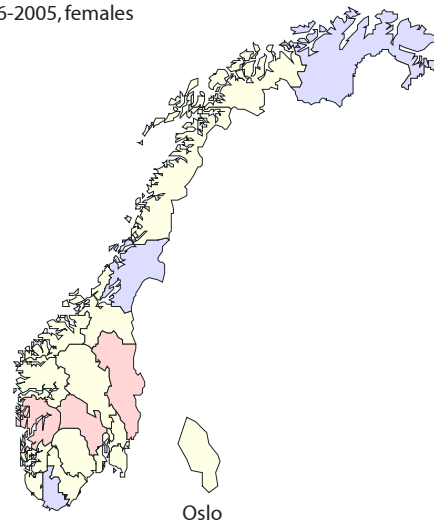


Fig. 3.5.7 5-year relative survival in percent by period and stage - 1956-2000, males

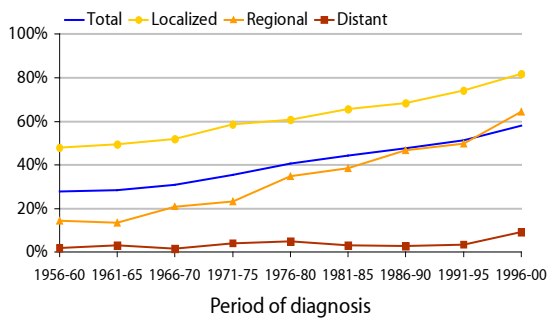


Fig. 3.6.7 5-year relative survival in percent by period and stage - 1956-2000, females

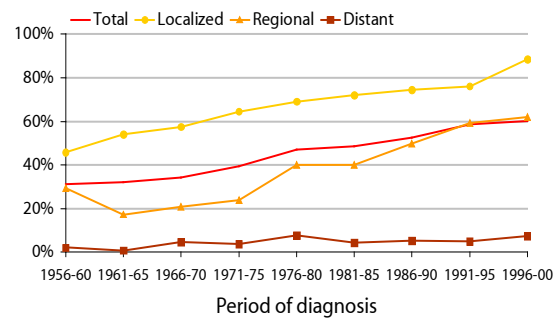


Fig. 3.7.7 1-5-year relative survival by stage, diagnosed in the period 1996-2000, males

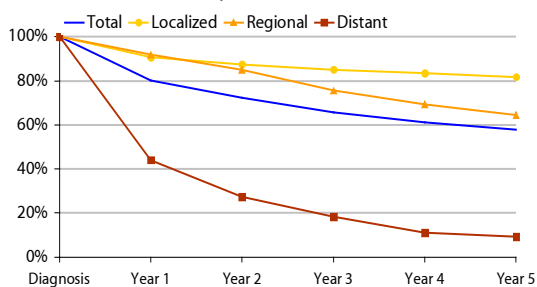


Fig. 3.8.7 1-5-year relative survival by stage, diagnosed in the period 1996-2000, females

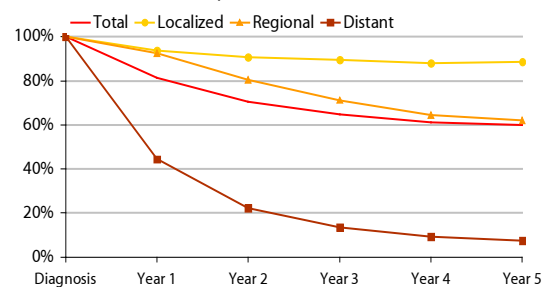


Fig. 3.1.8 Age-adjusted incidence rates - 1953-2005

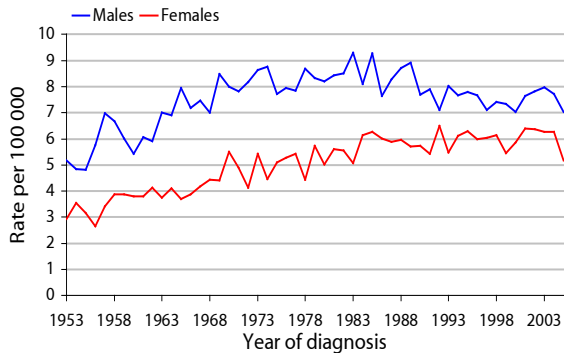


Fig. 3.2.8 Age-specific incidence rates - 2001-2005

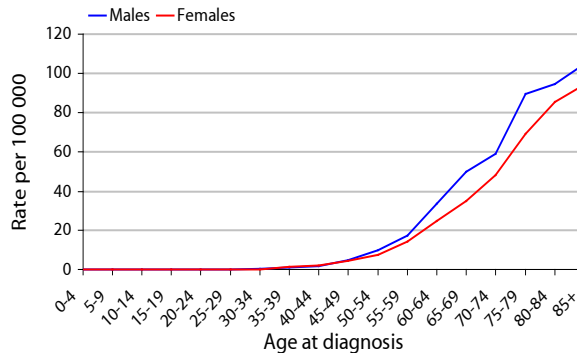


Fig. 3.3.8 Relative risk by county 1996-2005, males

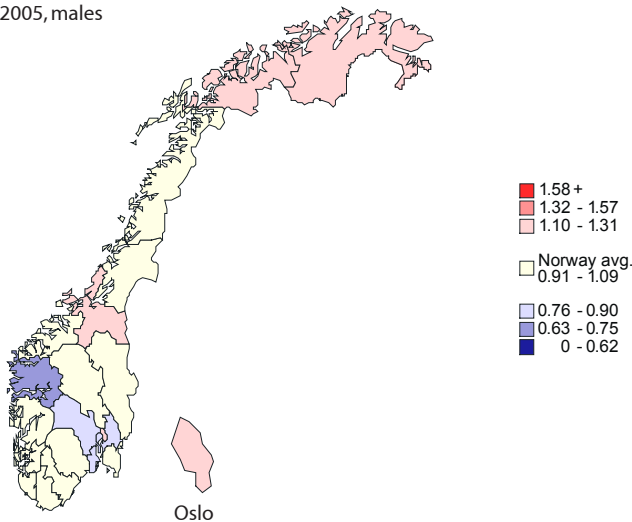


Fig. 3.4.8 Relative risk by county 1996-2005, females

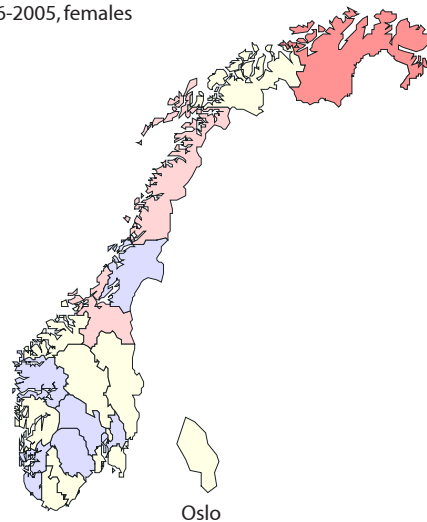


Fig. 3.5.8 5-year relative survival in percent by period and stage - 1956-2000, males

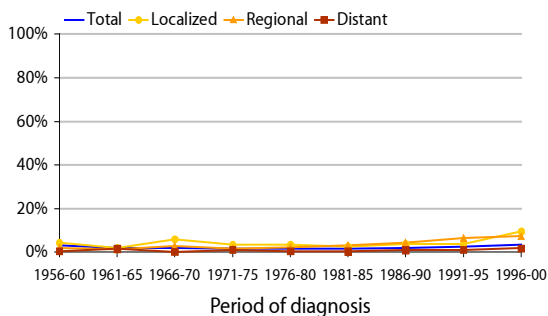


Fig. 3.6.8 5-year relative survival in percent by period and stage - 1956-2000, females

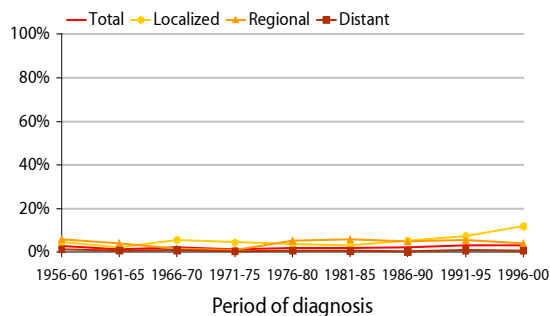


Fig. 3.7.8 1-5-year relative survival by stage, diagnosed in the period 1996-2000, males

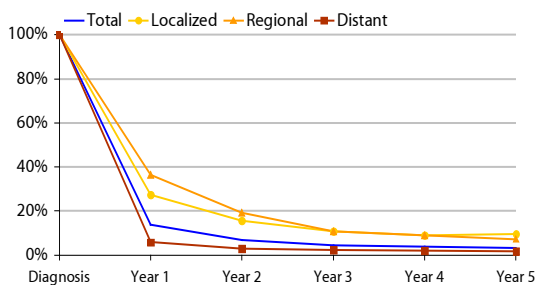


Fig. 3.8.8 1-5-year relative survival by stage, diagnosed in the period 1996-2000, females

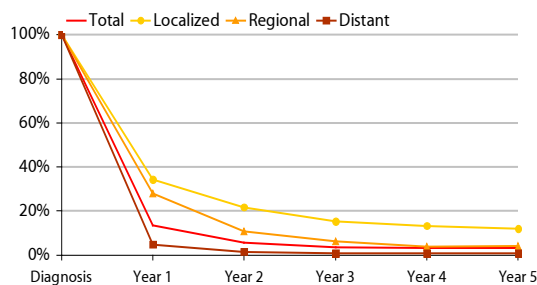




Fig. 3.1.9 Age-adjusted incidence rates - 1953-2005

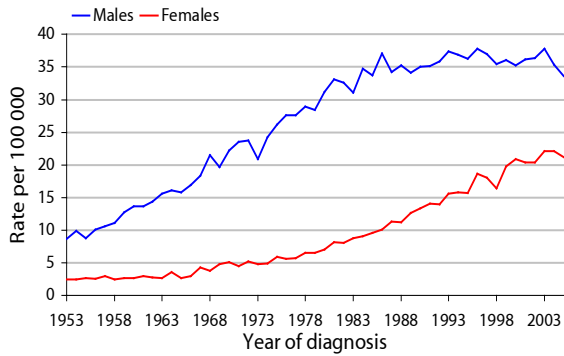


Fig. 3.2.9 Age-specific incidence rates - 2001-2005

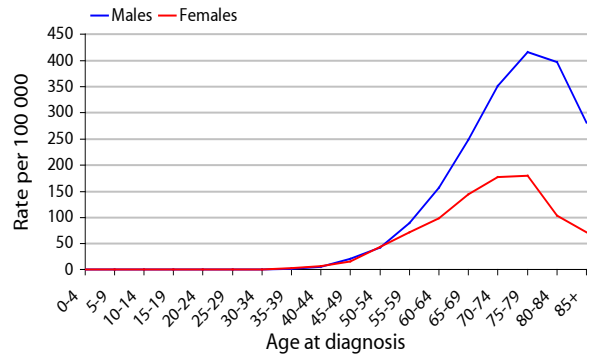


Fig. 3.3.9 Relative risk by county 1996-2005, males

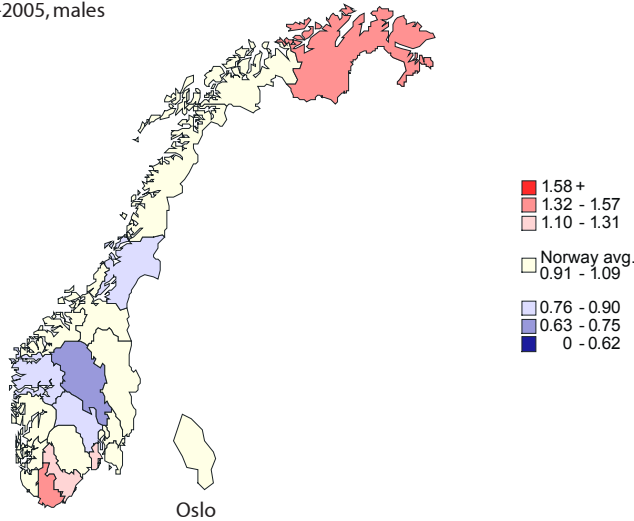


Fig. 3.4.9 Relative risk by county 1996-2005, females

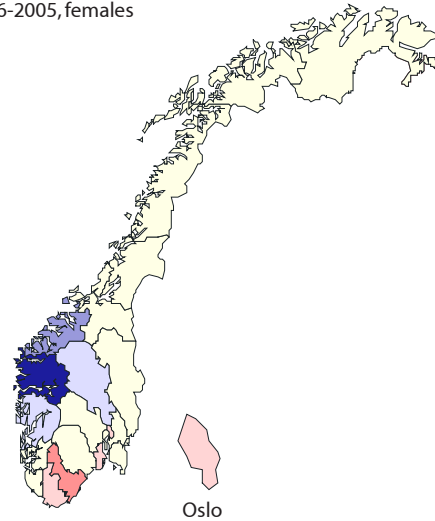


Fig. 3.5.9 5-year relative survival in percent by period and stage - 1956-2000, males

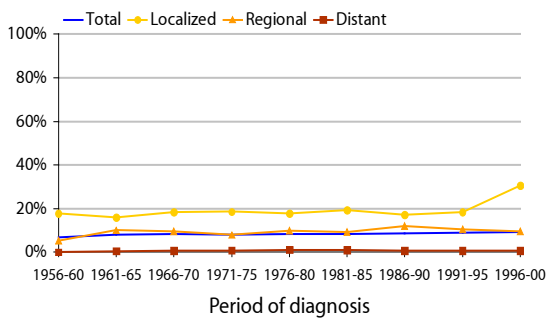


Fig. 3.6.9 5-year relative survival in percent by period and stage - 1956-2000, females

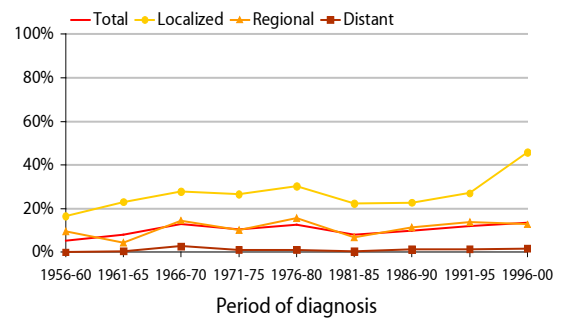


Fig. 3.7.9 1-5-year relative survival by stage, diagnosed in the period 1996-2000, males

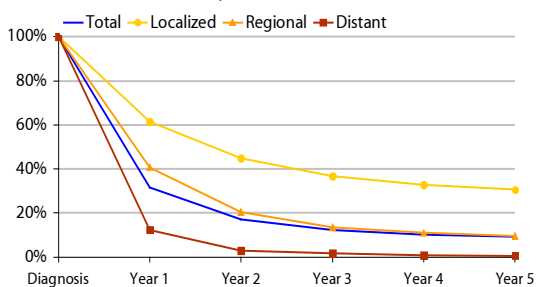
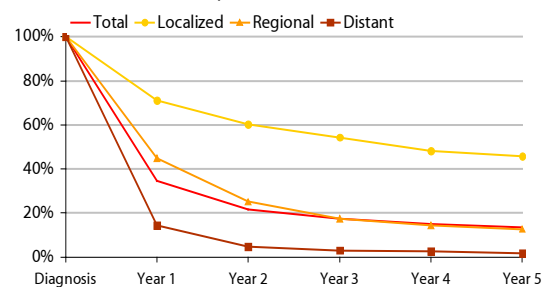


Fig. 3.8.9 1-5-year relative survival by stage, diagnosed in the period 1996-2000, females



# 170 Breast, females

Fig. 3.1.10 Age-adjusted incidence rates - 1953-2005

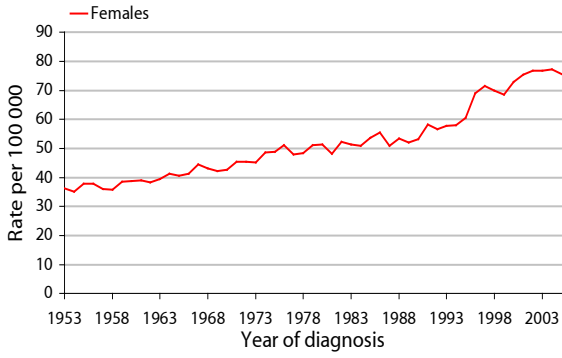


Fig. 3.2.10 Age-specific incidence rates - 2001-2005

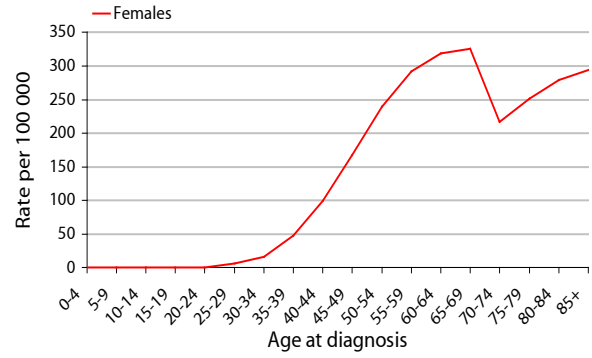


Fig. 3.4.10 Relative risk by county 1996-2005, females

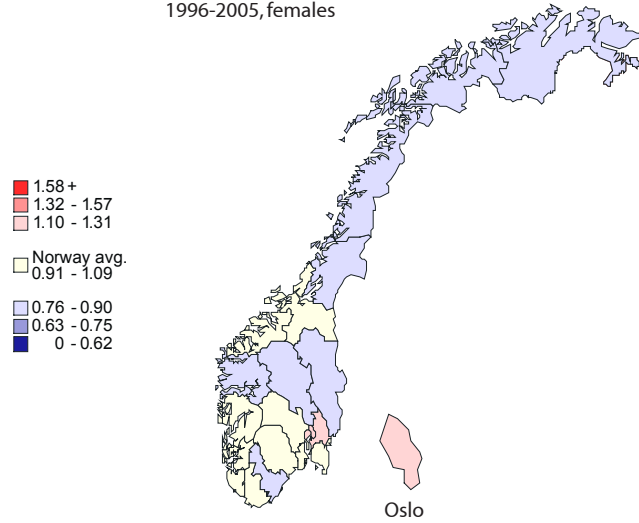


Fig. 3.6.10 5-year relative survival in percent by period and stage - 1956-2000, females

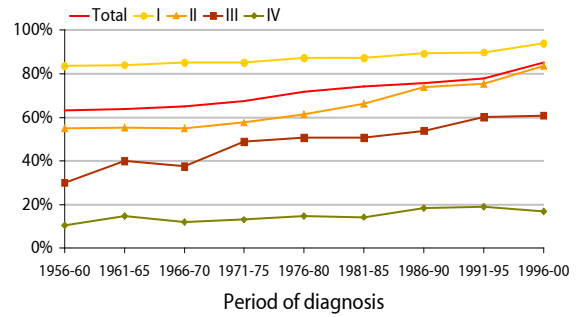


Fig. 3.8.10 1-5-year relative survival by stage, diagnosed in the period 1996-2000, females

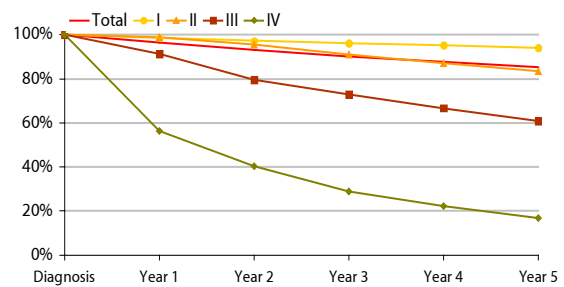


Fig. 3.1.11 Age-adjusted incidence rates - 1953-2005

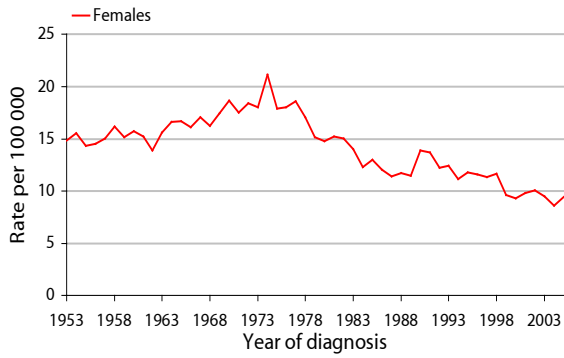


Fig. 3.2.11 Age-specific incidence rates - 2001-2005

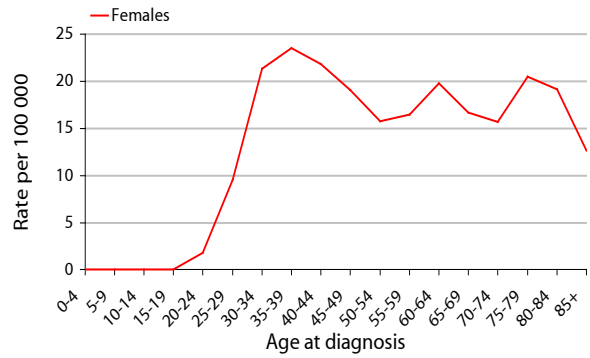


Fig. 3.4.11 Relative risk by county 1996-2005, females

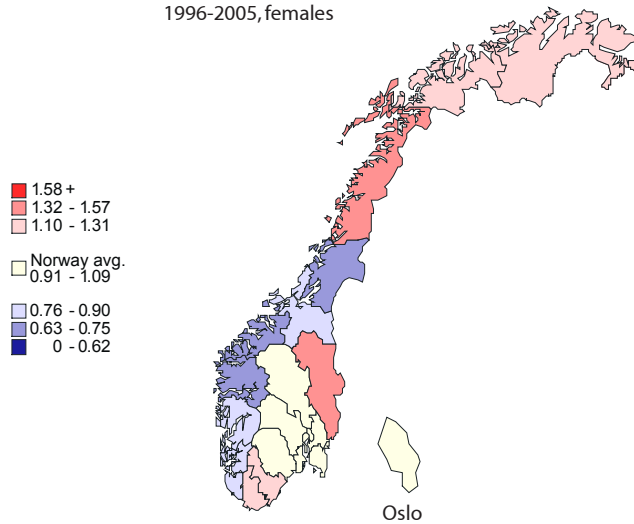


Fig. 3.6.11 5-year relative survival in percent by period and stage - 1956-2000, females

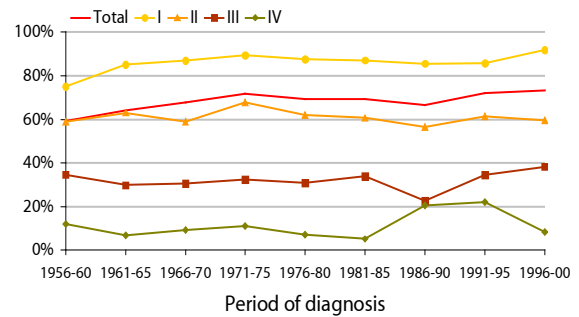


Fig. 3.8.11 1-5-year relative survival by stage, diagnosed in the period 1996-2000, females

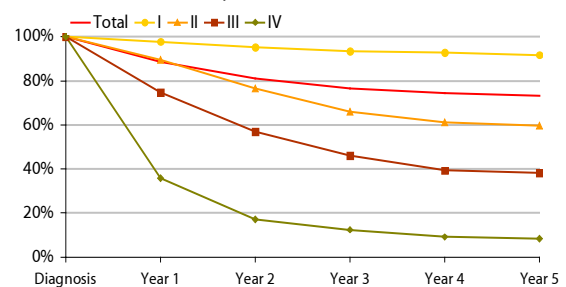


Fig. 3.1.12 Age-adjusted incidence rates - 1953-2005

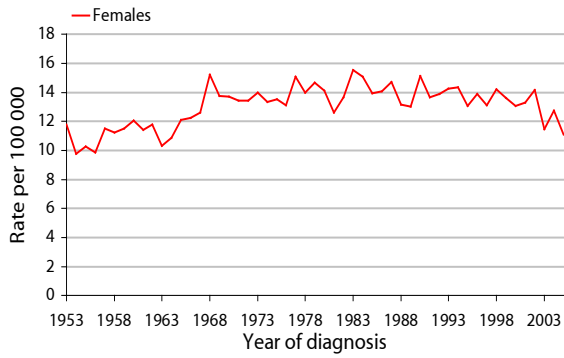


Fig. 3.2.12 Age-specific incidence rates - 2001-2005

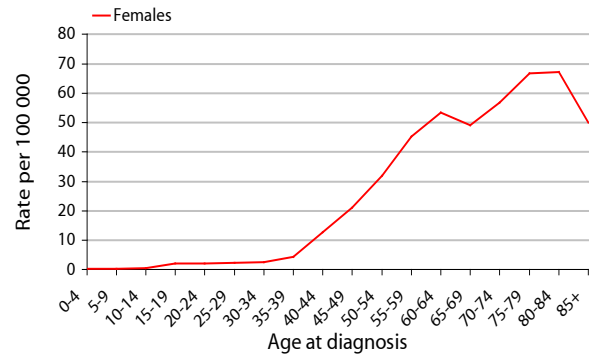


Fig. 3.4.12 Relative risk by county 1996-2005, females

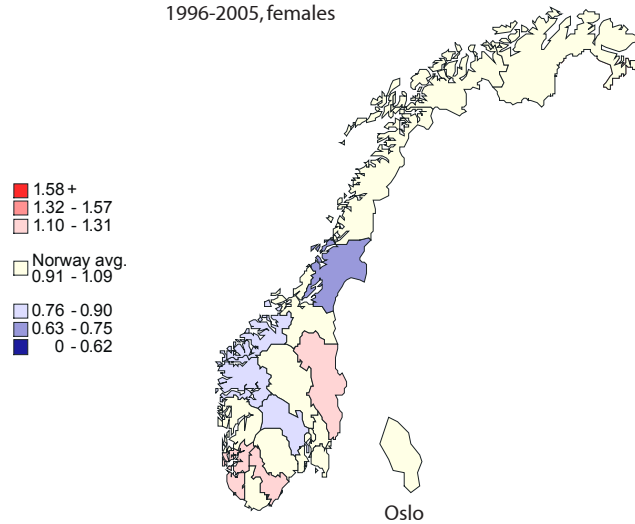


Fig. 3.6.12 5-year relative survival in percent by period and stage - 1956-2000, females

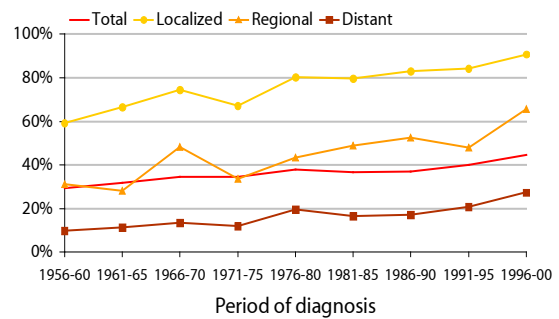


Fig. 3.8.12 1-5-year relative survival by stage, diagnosed in the period 1996-2000, females

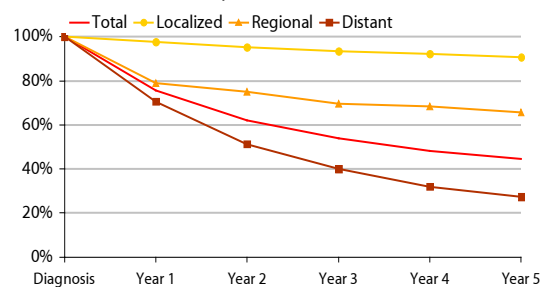


Fig. 3.1.13 Age-adjusted incidence rates - 1953-2005

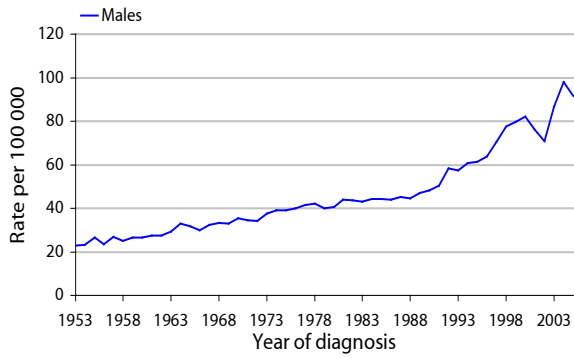


Fig. 3.2.13 Age-specific incidence rates - 2001-2005

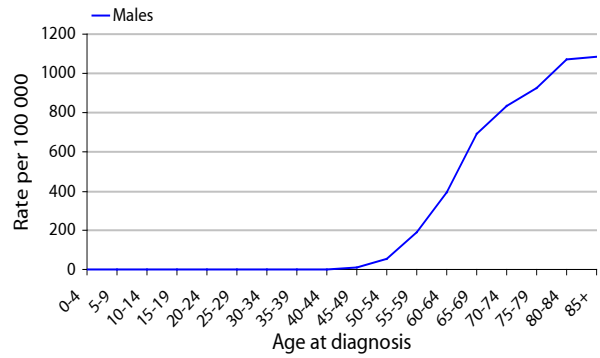


Fig. 3.3.13 Relative risk by county 1996-2005, males

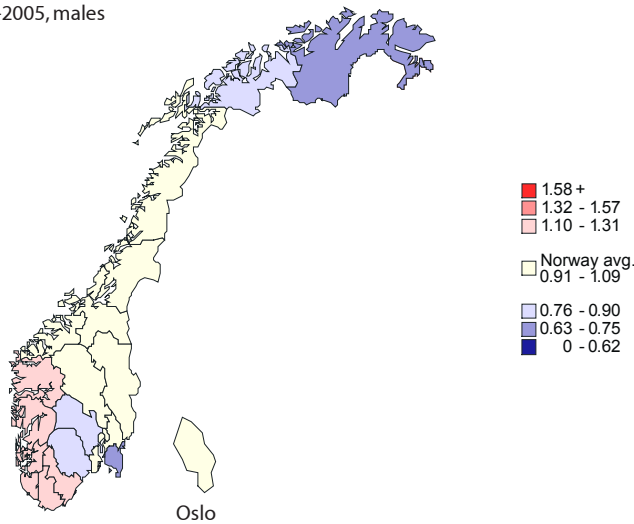


Fig. 3.5.13 5-year relative survival in percent by period and stage - 1956-2000, males

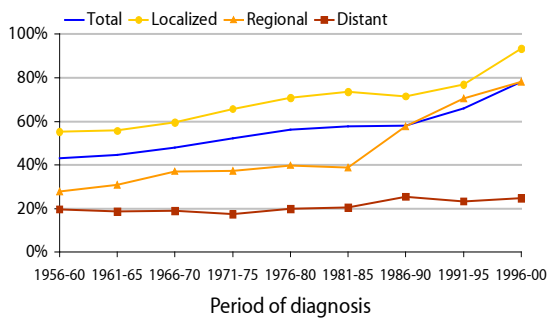
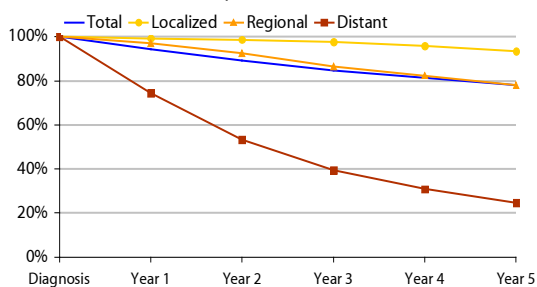


Fig. 3.7.13 1-5-year relative survival by stage, diagnosed in the period 1996-2000, males



# 172 Uterine corpus

Fig. 3.1.14 Age-adjusted incidence rates - 1953-2005

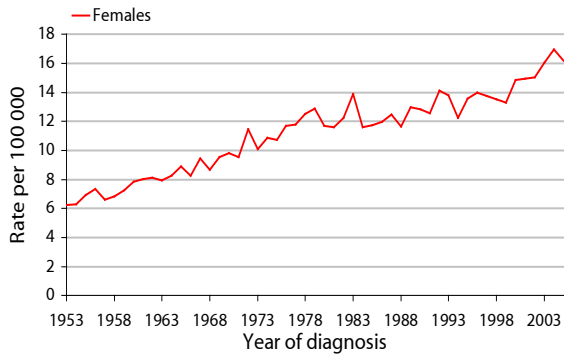


Fig. 3.2.14 Age-specific incidence rates - 2001-2005

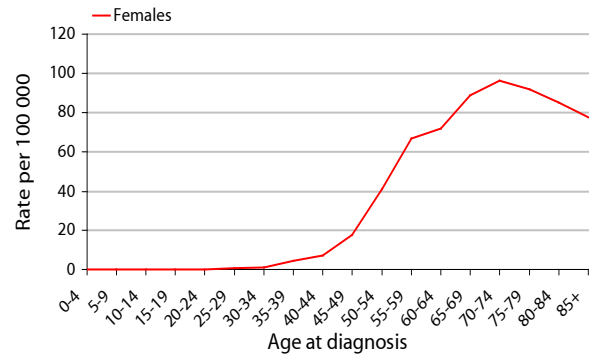


Fig. 3.4.14 Relative risk by county 1996-2005, females

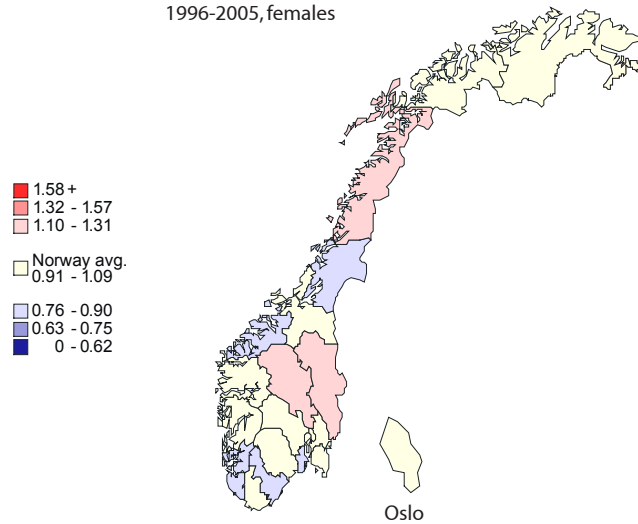


Fig. 3.6.14 5-year relative survival in percent by period and stage - 1956-2000, females

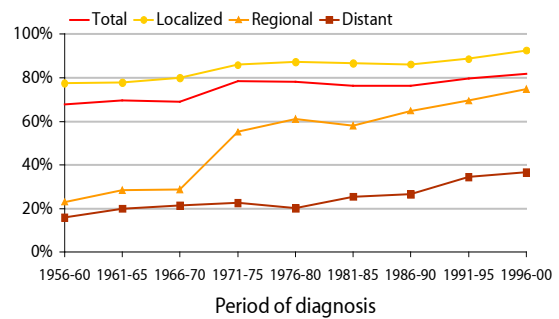


Fig. 3.8.14 1-5-year relative survival by stage, diagnosed in the period 1996-2000, females

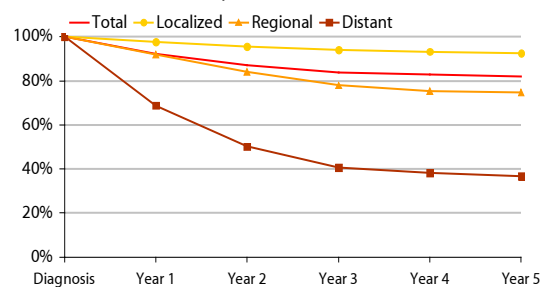


Fig. 3.1.15 Age-adjusted incidence rates - 1953-2005

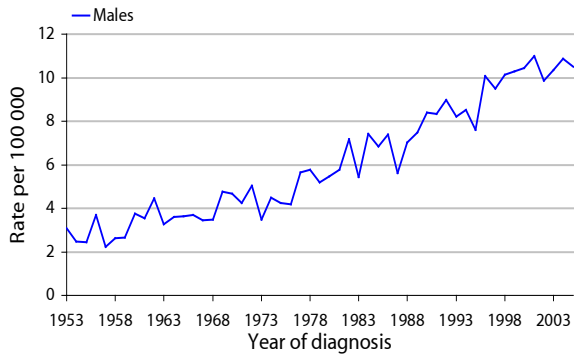


Fig. 3.2.15 Age-specific incidence rates - 2001-2005

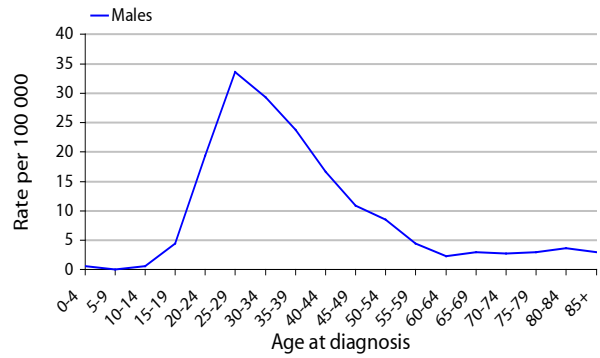


Fig. 3.3.15 Relative risk by county 1996-2005, males

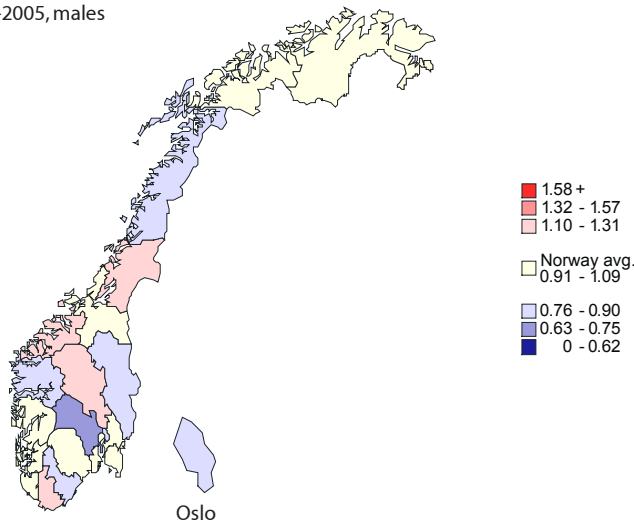


Fig. 3.5.15 5-year relative survival in percent by period and stage - 1956-2000, males

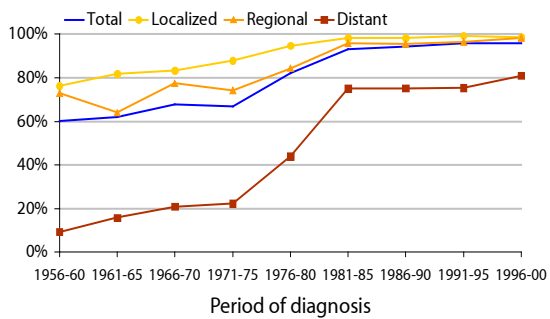
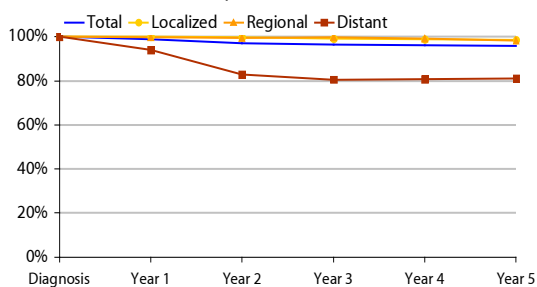


Fig. 3.7.15 1-5-year relative survival by stage, diagnosed in the period 1996-2000, males



# 180 Kidney excluding renal pelvis

Fig. 3.1.16 Age-adjusted incidence rates - 1953-2005

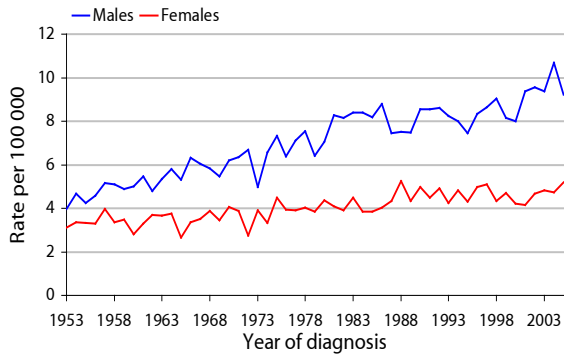


Fig. 3.2.16 Age-specific incidence rates - 2001-2005

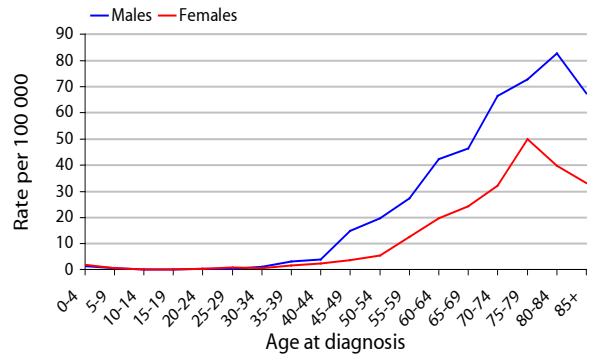


Fig. 3.3.16 Relative risk by county 1996-2005, males

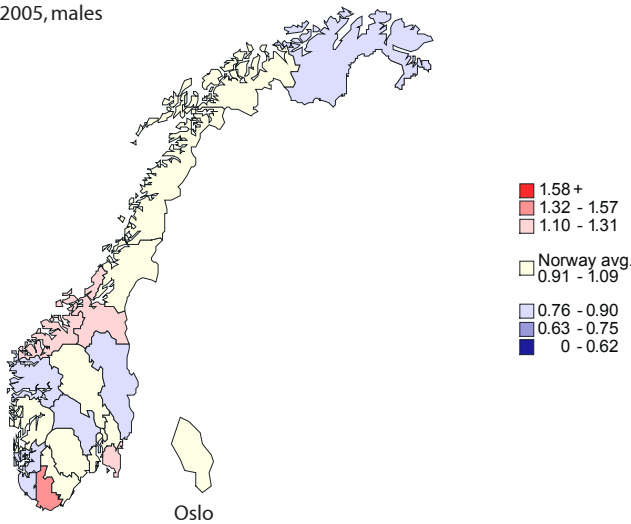


Fig. 3.4.16 Relative risk by county 1996-2005, females

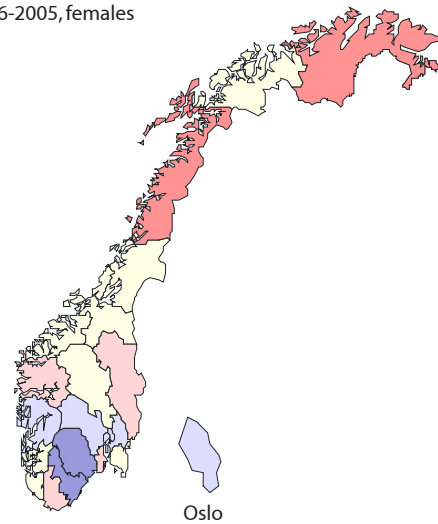


Fig. 3.5.16 5-year relative survival in percent by period and stage - 1956-2000, males

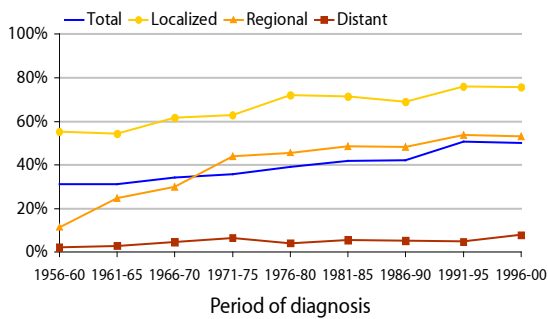


Fig. 3.6.16 5-year relative survival in percent by period and stage - 1956-2000, females

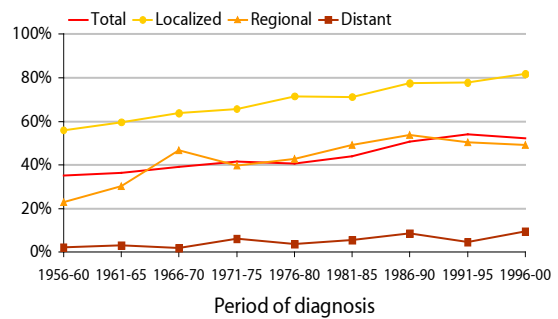


Fig. 3.7.16 1-5-year relative survival by stage, diagnosed in the period 1996-2000, males

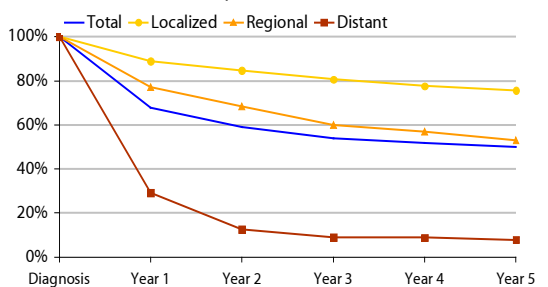
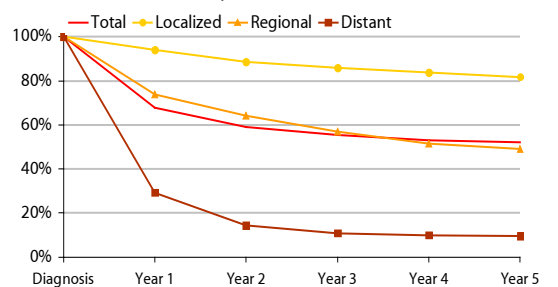


Fig. 3.8.16 1-5-year relative survival by stage, diagnosed in the period 1996-2000, females





# 181 Bladder and other urinary organs

Fig. 3.1.17 Age-adjusted incidence rates - 1953-2005

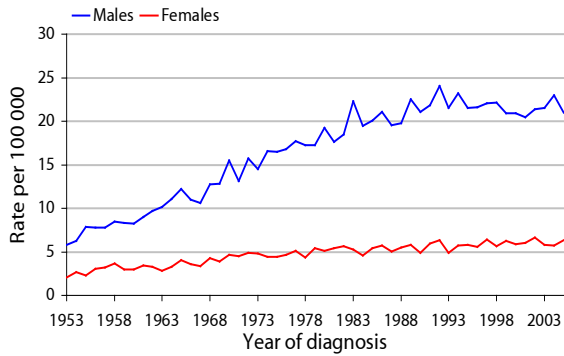


Fig. 3.2.17 Age-specific incidence rates - 2001-2005

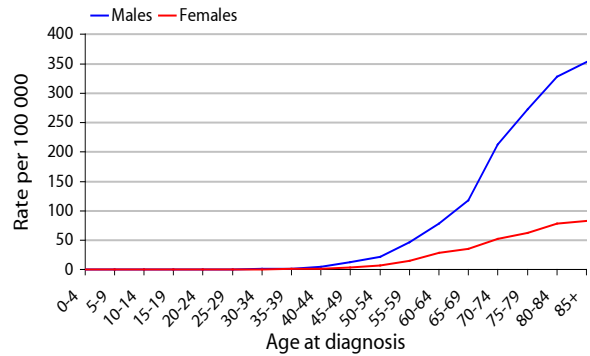


Fig. 3.3.17 Relative risk by county 1996-2005, males

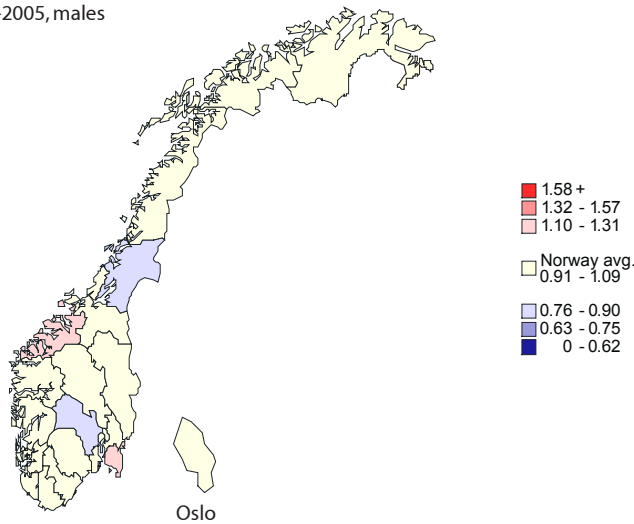


Fig. 3.4.17 Relative risk by county 1996-2005, females

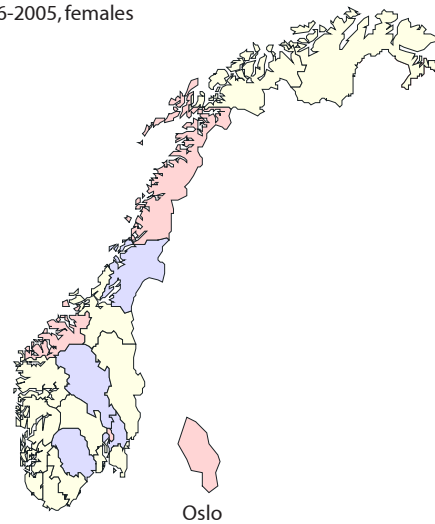


Fig. 3.5.17 5-year relative survival in percent by period and stage - 1956-2000, males

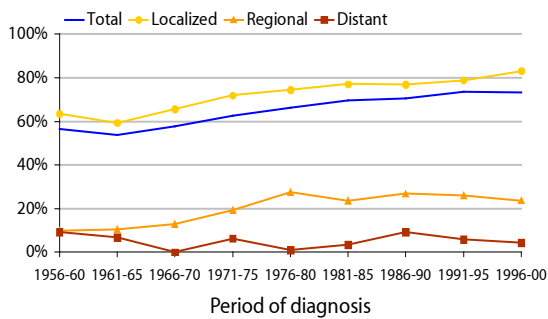


Fig. 3.6.17 5-year relative survival in percent by period and stage - 1956-2000, females

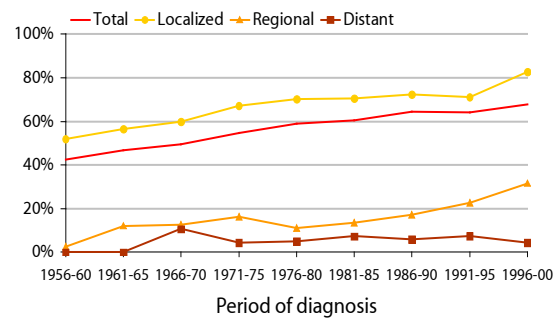


Fig. 3.7.17 1-5-year relative survival by stage, diagnosed in the period 1996-2000, males

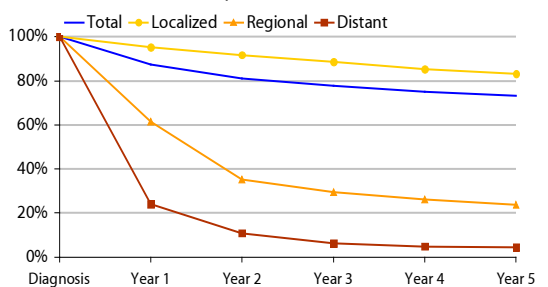
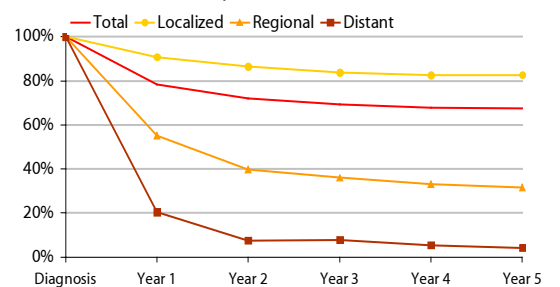


Fig. 3.8.17 1-5-year relative survival by stage, diagnosed in the period 1996-2000, females



# 190 Melanoma of skin

Fig. 3.1.18 Age-adjusted incidence rates - 1953-2005

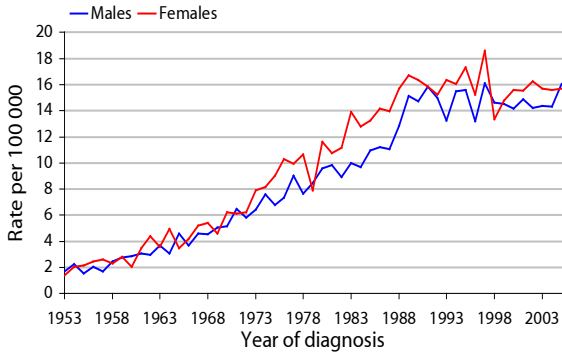


Fig. 3.2.18 Age-specific incidence rates - 2001-2005

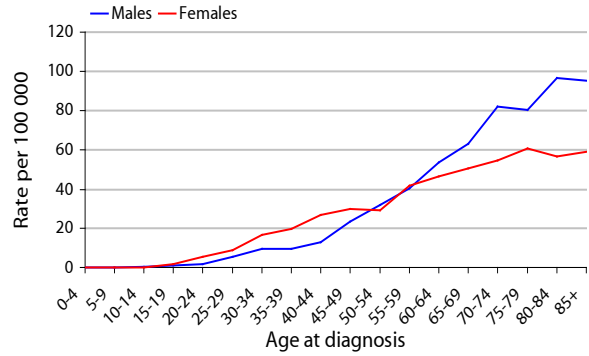


Fig. 3.3.18 Relative risk by county 1996-2005, males

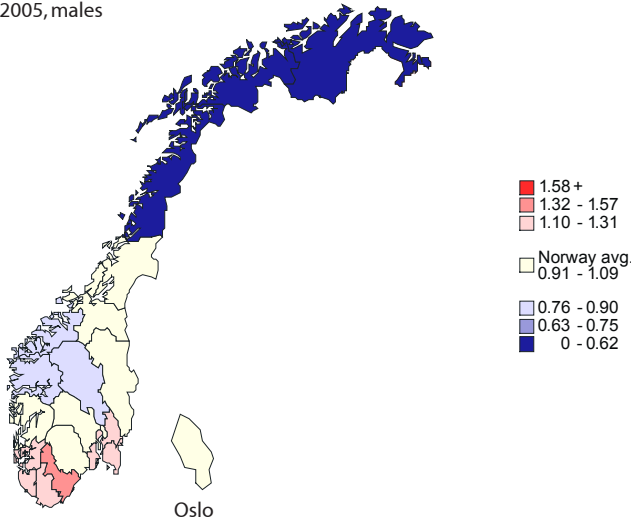


Fig. 3.4.18 Relative risk by county 1996-2005, females

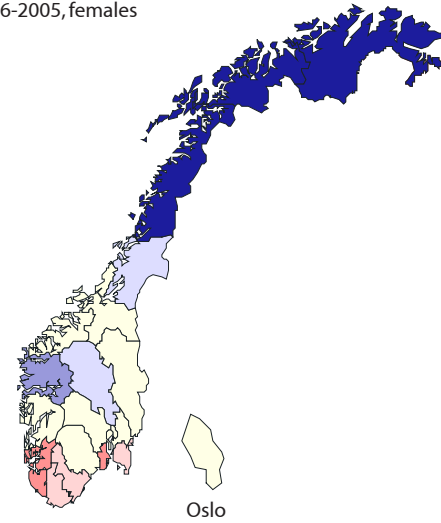


Fig. 3.5.18 5-year relative survival in percent by period and stage - 1956-2000, males

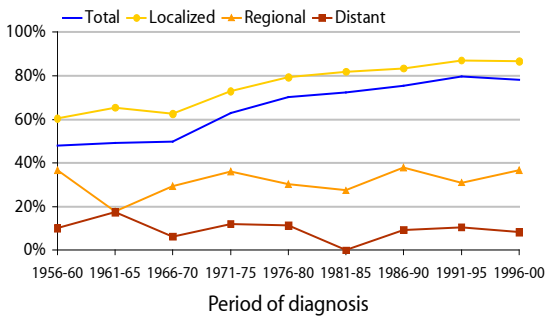


Fig. 3.6.18 5-year relative survival in percent by period and stage - 1956-2000, females

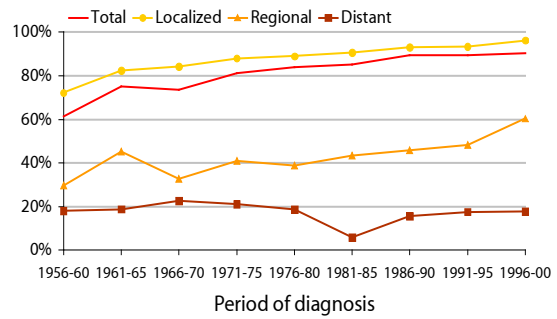


Fig. 3.7.18 1-5-year relative survival by stage, diagnosed in the period 1996-2000, males

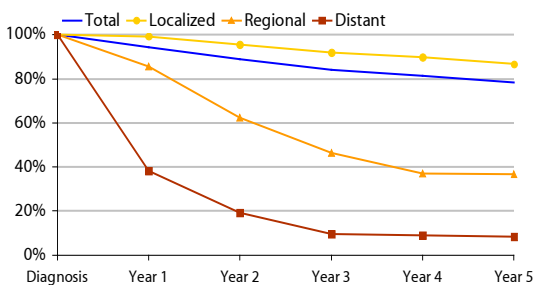


Fig. 3.8.18 1-5-year relative survival by stage, diagnosed in the period 1996-2000, females

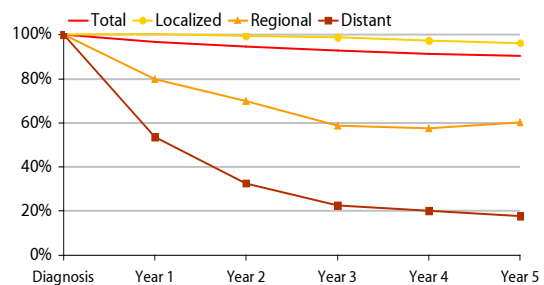


Fig. 3.1.19 Age-adjusted incidence rates - 1953-2005

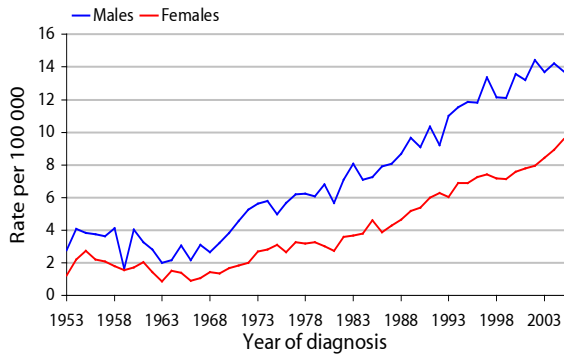


Fig. 3.2.19 Age-specific incidence rates - 2001-2005

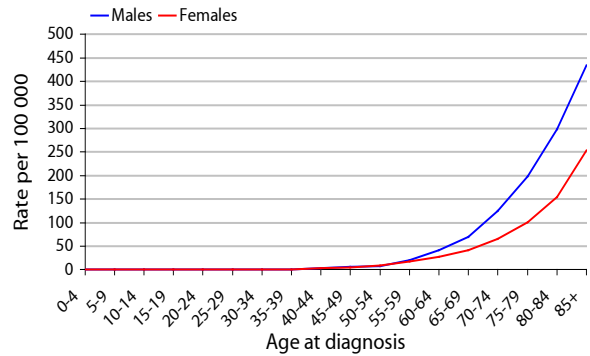


Fig. 3.3.19 Relative risk by county 1996-2005, males

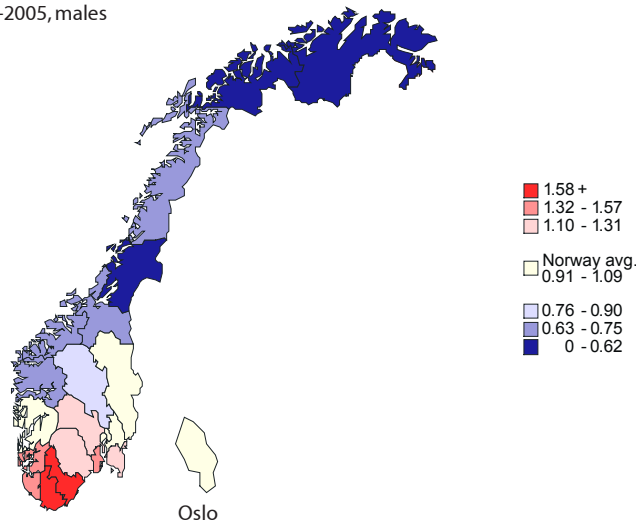


Fig. 3.4.19 Relative risk by county 1996-2005, females

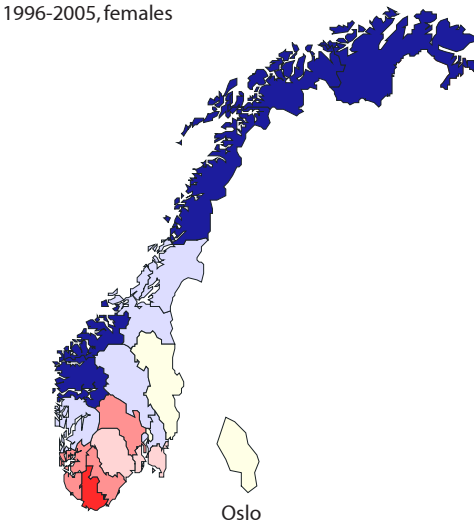


Fig. 3.5.19 5-year relative survival in percent by period and stage - 1956-2000, males

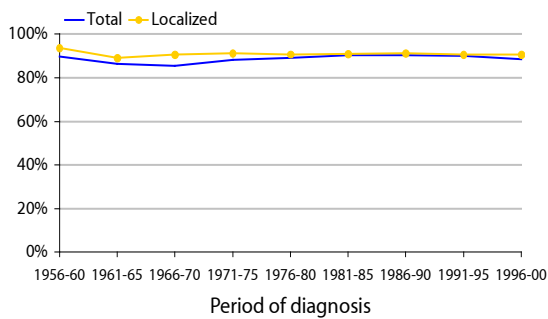


Fig. 3.6.19 5-year relative survival in percent by period and stage - 1956-2000, females

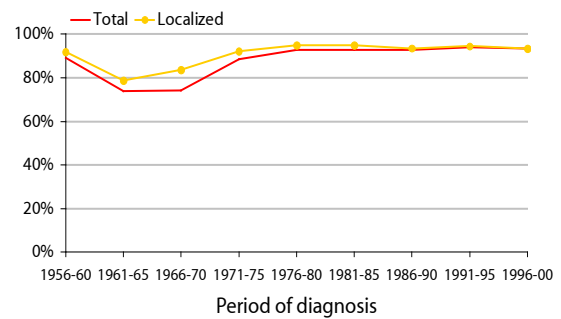


Fig. 3.7.19 1-5-year relative survival by stage, diagnosed in the period 1996-2000, males

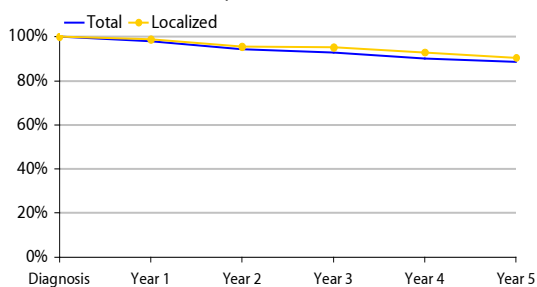


Fig. 3.8.19 1-5-year relative survival by stage, diagnosed in the period 1996-2000, females

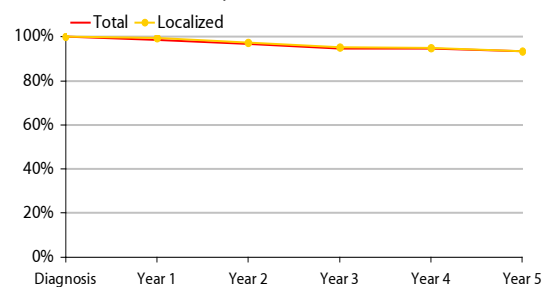


Fig. 3.1.20 Age-adjusted incidence rates - 1953-2005

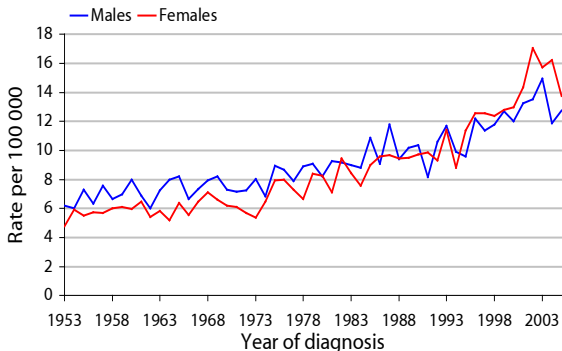


Fig. 3.2.20 Age-specific incidence rates - 2001-2005

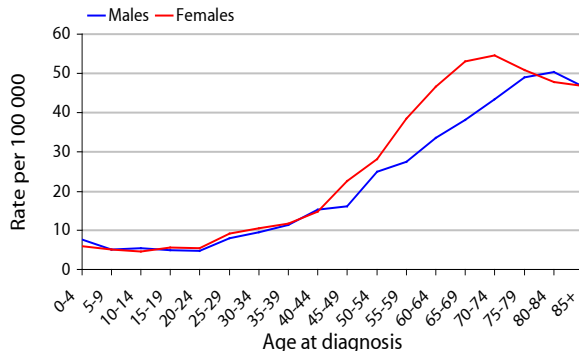


Fig. 3.3.20 Relative risk by county 1996-2005, males

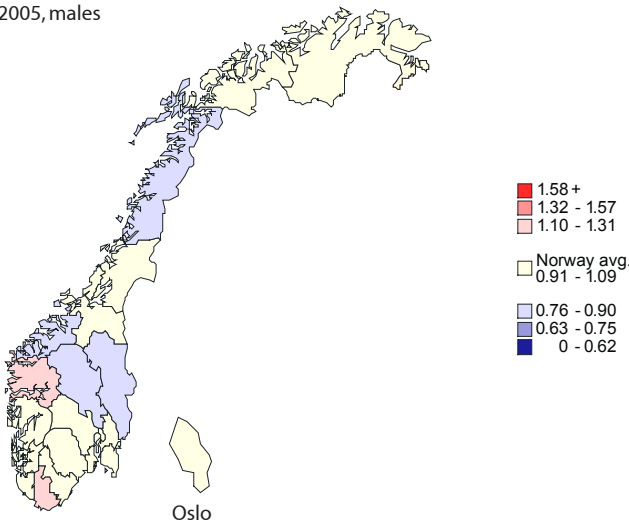


Fig. 3.4.20 Relative risk by county 1996-2005, females

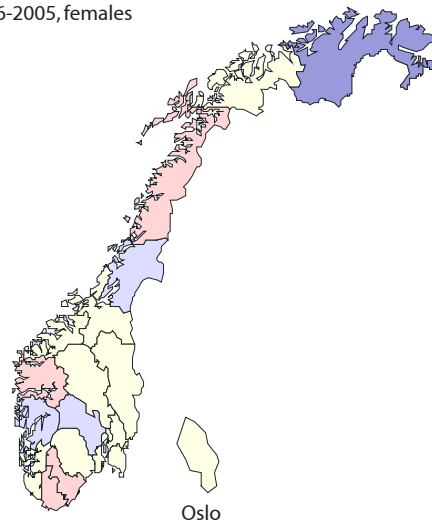


Fig. 3.5.20 5-year relative survival in percent by period and stage - 1956-2000, males

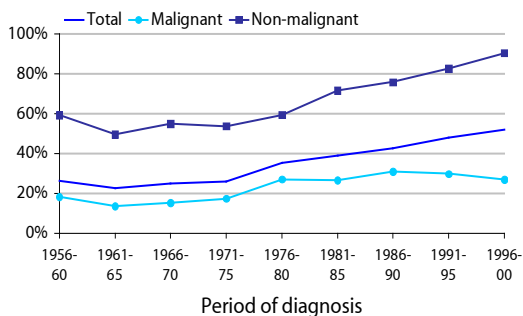


Fig. 3.6.20 5-year relative survival in percent by period and stage - 1956-2000, females

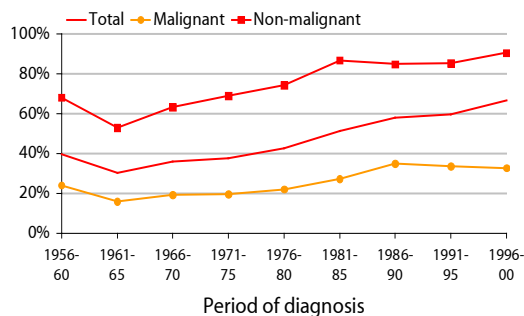


Fig. 3.7.20 1-5-year relative survival by stage, diagnosed in the period 1996-2000, males

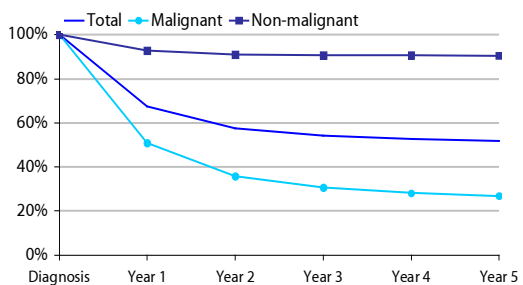


Fig. 3.8.20 1-5-year relative survival by stage, diagnosed in the period 1996-2000, females

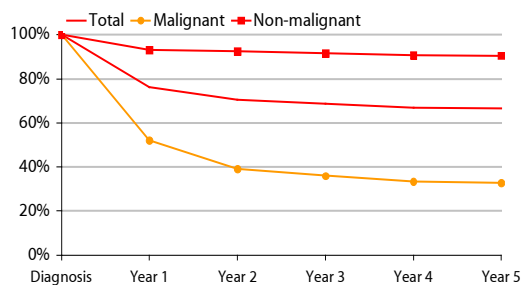


Fig. 3.1.21 Age-adjusted incidence rates - 1953-2005

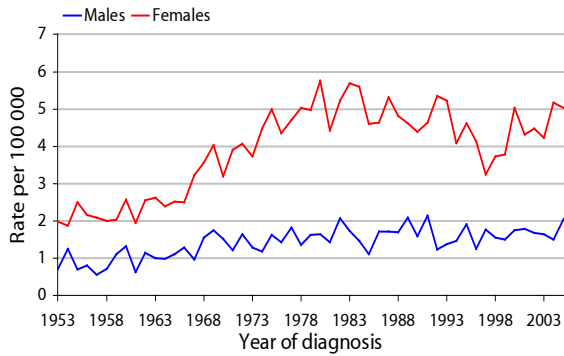


Fig. 3.2.21 Age-specific incidence rates - 2001-2005

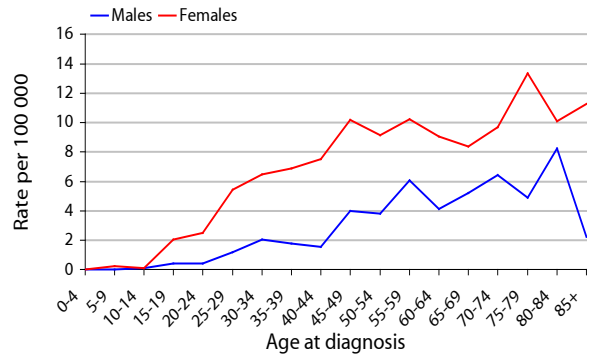


Fig. 3.3.21 Relative risk by county 1996-2005, males

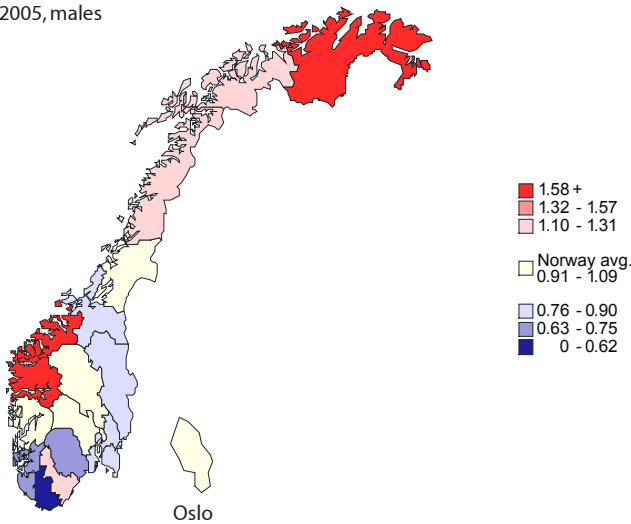


Fig. 3.4.21 Relative risk by county 1996-2005, females

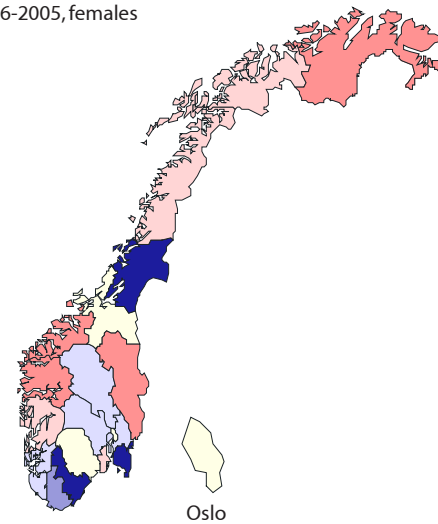


Fig. 3.5.21 5-year relative survival in percent by period and stage - 1956-2000, males

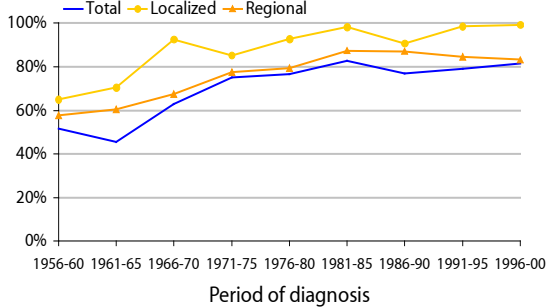


Fig. 3.6.21 5-year relative survival in percent by period and stage - 1956-2000, females

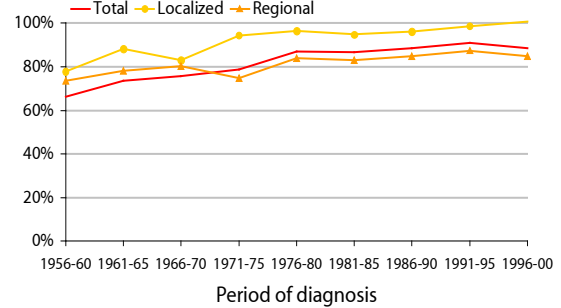


Fig. 3.7.21 1-5-year relative survival by stage, diagnosed in the period 1996-2000, males

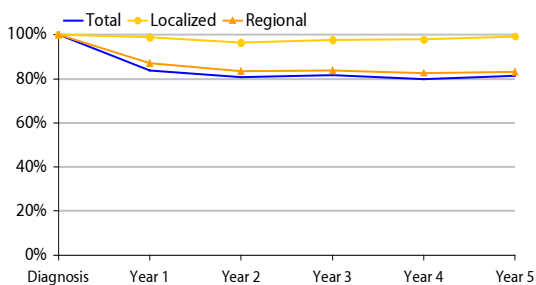
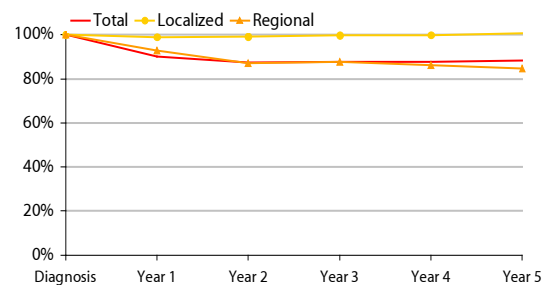


Fig. 3.8.21 1-5-year relative survival by stage, diagnosed in the period 1996-2000, females



# 201 Hodgkin lymphoma

Fig. 3.1.22 Age-adjusted incidence rates - 1953-2005

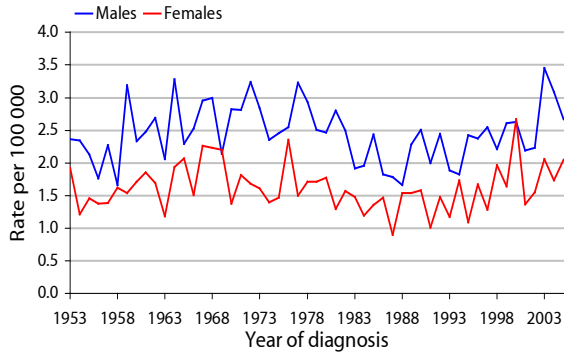


Fig. 3.2.22 Age-specific incidence rates - 2001-2005

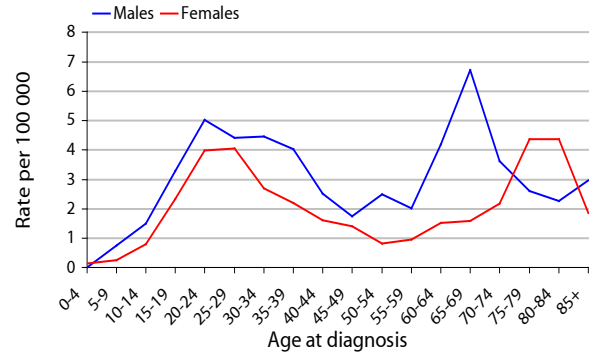


Fig. 3.3.22 Relative risk by county 1996-2005, males

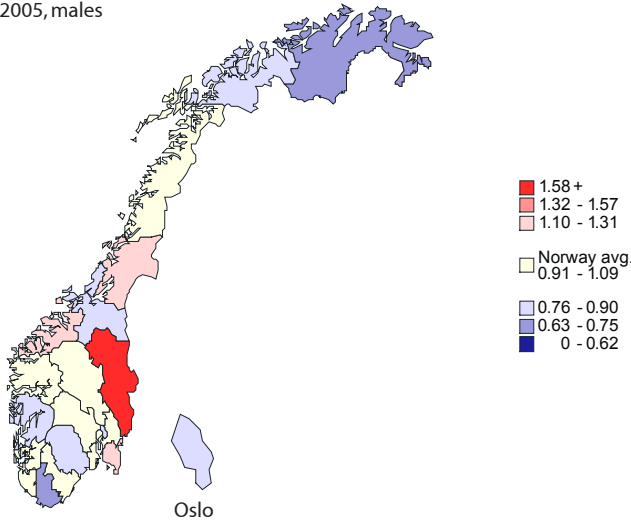


Fig. 3.4.22 Relative risk by county 1996-2005, females

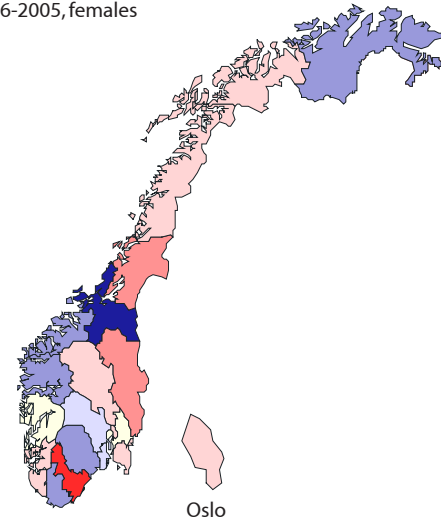


Fig. 3.5.22 5-year relative survival in percent by period - 1956-2000, males

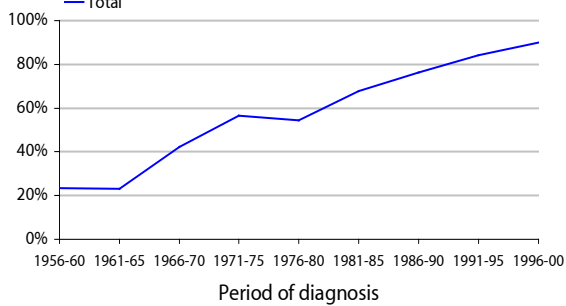


Fig. 3.6.22 5-year relative survival in percent by period - 1956-2000, females

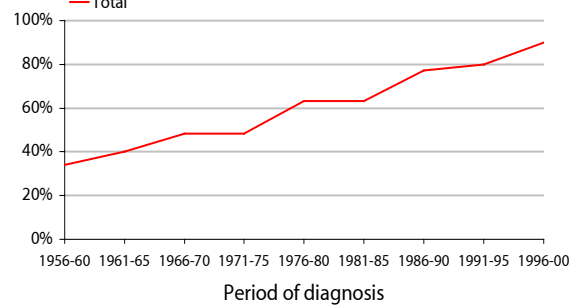


Fig. 3.7.22 1-5-year relative survival, diagnosed in the period 1996-2000, males

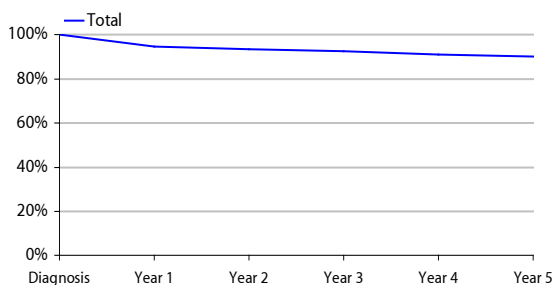
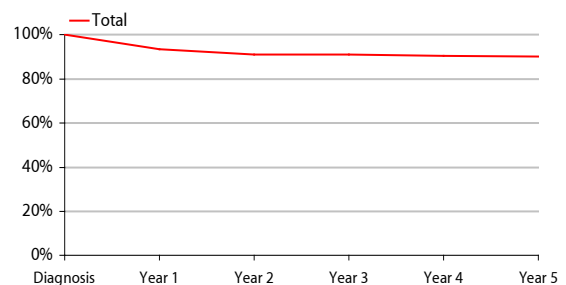


Fig. 3.8.22 1-5-year relative survival, diagnosed in the period 1996-2000, females



## 200+202 Non-Hodgkin lymphoma

Fig. 3.1.23 Age-adjusted incidence rates - 1953-2005

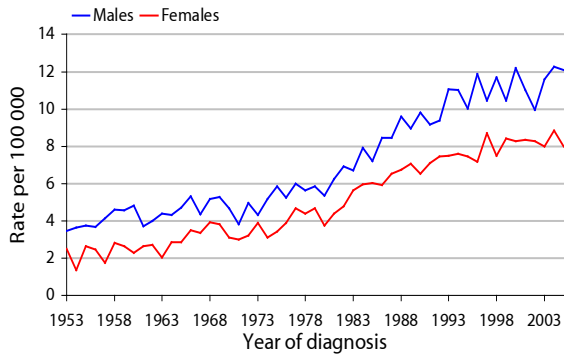


Fig. 3.2.23 Age-specific incidence rates - 2001-2005

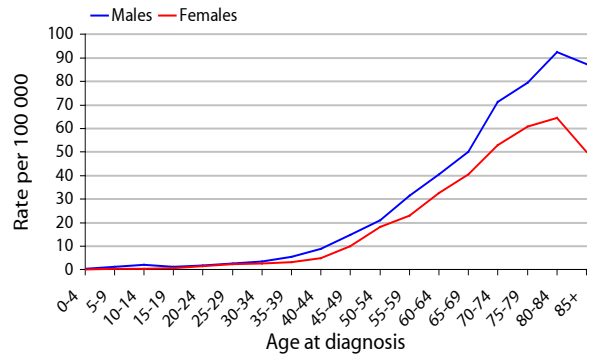


Fig. 3.3.23 Relative risk by county 1996-2005, males

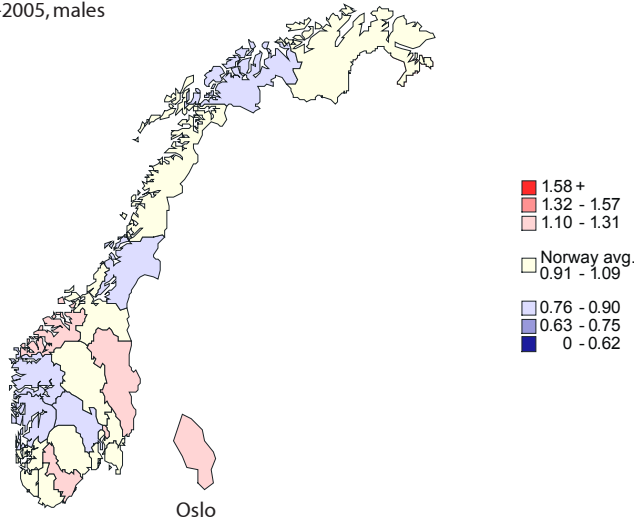


Fig. 3.4.23 Relative risk by county 1996-2005, females

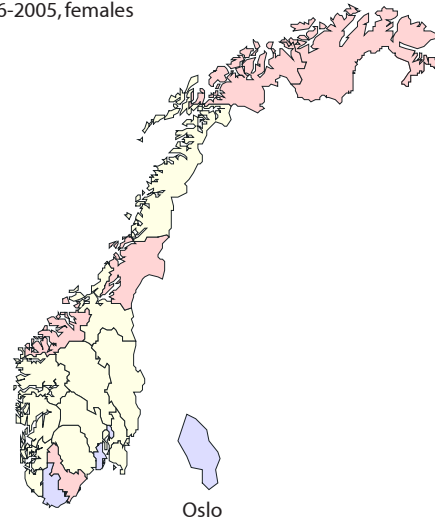


Fig. 3.5.23 5-year relative survival in percent by period - 1956-2000, males

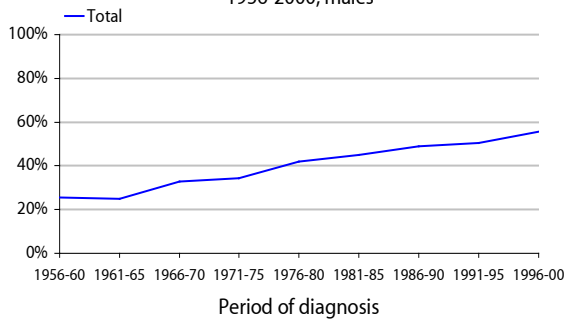


Fig. 3.6.23 5-year relative survival in percent by period - 1956-2000, females

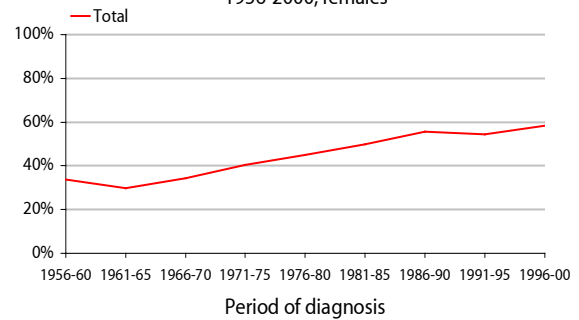


Fig. 3.7.23 1-5-year relative survival, diagnosed in the period 1996-2000, males

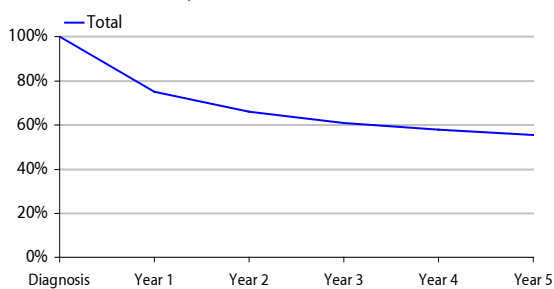
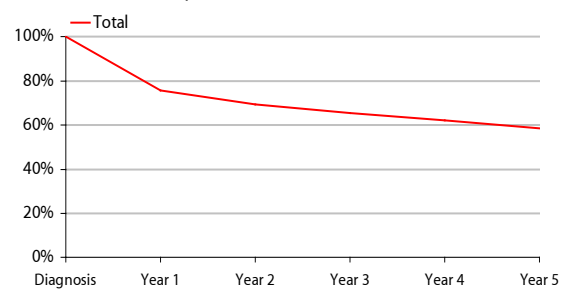


Fig. 3.8.23 1-5-year relative survival, diagnosed in the period 1996-2000, females



# 204 Leukemia, acute

Fig. 3.1.24 Age-adjusted incidence rates - 1953-2005

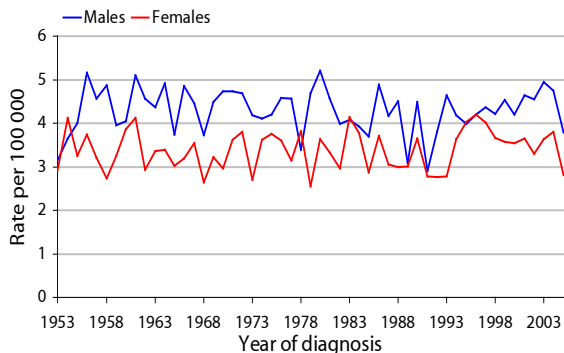


Fig. 3.2.24 Age-specific incidence rates - 2001-2005

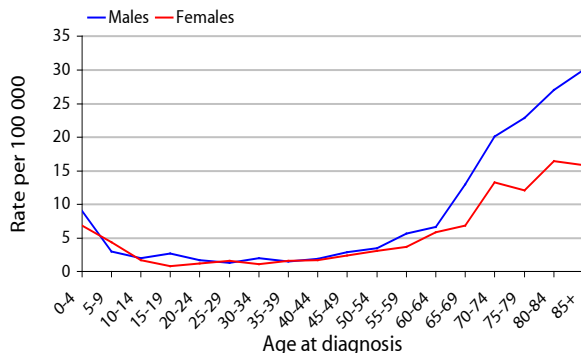


Fig. 3.3.24 Relative risk by county 1996-2005, males

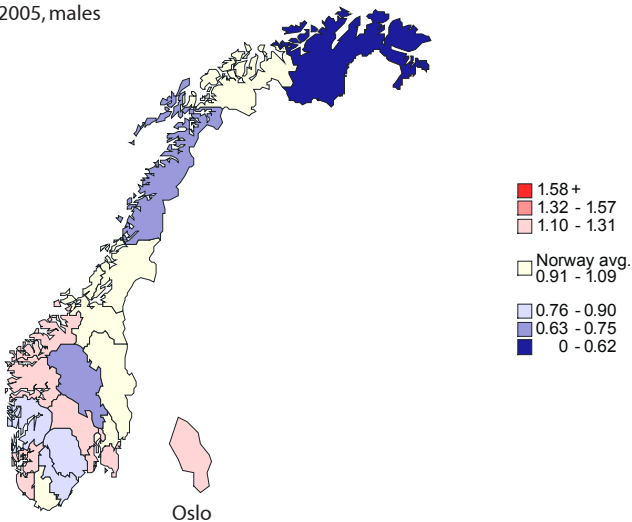


Fig. 3.4.24 Relative risk by county 1996-2005, females

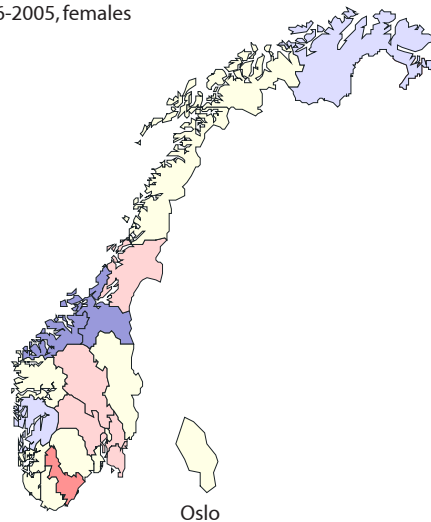


Fig. 3.5.24 5-year relative survival in percent by period - 1956-2000, males

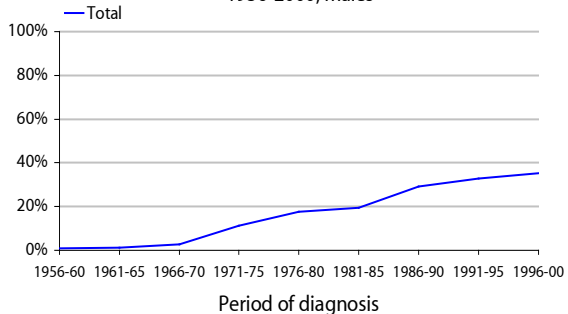


Fig. 3.6.24 5-year relative survival in percent by period - 1956-2000, females

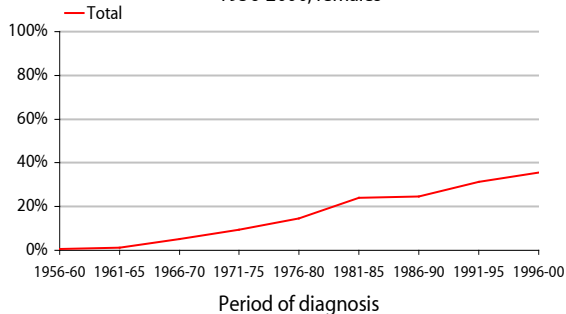


Fig. 3.7.24 1-5-year relative survival, diagnosed in the period 1996-2000, males

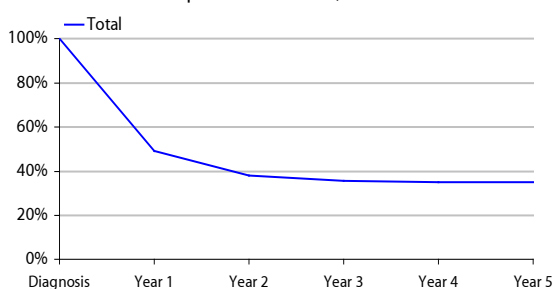


Fig. 3.8.24 1-5-year relative survival, diagnosed in the period 1996-2000, females

